

# THE PURDUE PHARMACIST

Fall & Winter 2010 | *Volume 86, Issue 2*



**PURDUE**  
UNIVERSITY

## FROM THE DEAN



Last year we completed celebrating the 125 years of rich tradition that is Purdue Pharmacy. Reflecting on the accomplishments of the past provided us with a healthy reminder that we are a program of excellence because of the strong foundation laid by our predecessors. It also pointed to the fact that the future of Purdue Pharmacy will be greatly influenced by how we, as stewards of the present, build on that foundation. I assure you that our College leadership team takes that responsibility seriously. In this issue of *The Purdue Pharmacist*, you will read about how we are working to assure that Purdue Pharmacy remains a program of excellence.

One element of planning for the future is to position the College with the resources necessary to fulfill our mission. At present, about 15% of our revenue comes from State of Indiana allocations, while another 25% is derived from tuition. This means we must raise approximately 60% of our revenue from external sources, and gifts from our loyal alumni are an important part of that external support. For this reason, we have launched a Planned Giving Campaign to provide resources for the future. As you will read on p. 2, Scott (BS 1980) and Sandy Brower have provided a very generous lead gift for this campaign. We are grateful to Marv Richardson (BS 1980) for his leadership as Chair of the Planned Giving Campaign.

Preparing for the future also means having the facilities necessary for our faculty, staff, and students to learn, discover, and apply the latest developments in our field. While the Heine Pharmacy Building has served as a good home for the College, the nature and amount of space provided by this facility falls short of what is needed for today's pharmacy program. As a part of their 30 year reunion (see p. 7), the classes of 1980 and 1981 have raised funds to help us pay for conceptual design and planning for a new facility. We expect this to be completed over at least three phases and are hoping to launch the first phase around 2015. The economy will, of course, influence the timing of any capital project.

Positioning the College for the future requires that we offer a cutting edge curriculum that will prepare our students to seize the opportunities of the 21st century. In this issue, you can read about our new Doctor of Pharmacy curriculum that will be rolled out in 2012 (p. 22). This new curriculum will maintain a strong scientific foundation, while introducing students to patient care concepts and experiences earlier in the curriculum.

We are committed to assuring that your Purdue degree continues to open doors of opportunity for you in the years ahead. I hope you'll join us in one of the many opportunities to be a part of continuing to build on our strong foundation.

All hail from OI' Purdue!

CRAIG K. SVENSSON  
Dean

THE PURDUE PHARMACIST  
*Volume 86, Issue 2 (Fall & Winter 2010)*

### ADMINISTRATION

Craig K. Svensson  
*Dean, College of Pharmacy*

Steven R. Abel  
*Associate Dean for Clinical Programs*

Eric L. Barker  
*Associate Dean for Research*

Robert L. Geahlen  
*Associate Dean for Graduate Programs*

Holly L. Mason  
*Senior Associate Dean*

### DEPARTMENT HEADS

Steven R. Abel  
*Pharmacy Practice*

Richard F. Borch  
*Medicinal Chemistry and Molecular Pharmacology*

Elizabeth M. Topp  
*Industrial and Physical Pharmacy*

### ADVANCEMENT OFFICE

Amy K. Chandler  
*Writer/Editor, The Purdue Pharmacist*  
[chandler@purdue.edu](mailto:chandler@purdue.edu)

Dana Neary  
*Manager of Alumni Relations and Special Events*

Christopher Smith  
*Director of Advancement*

Linda A. Yelton  
*Manager of Stewardship*

College of Pharmacy  
Purdue University  
Heine Pharmacy Building, Room 104  
575 Stadium Mall Drive  
West Lafayette, IN 47907-2091  
(765) 494-1361  
(765) 494-7800 Fax  
[www.pharmacy.purdue.edu](http://www.pharmacy.purdue.edu)

*The Purdue Pharmacist* is published biannually for alumni and friends of the College of Pharmacy at Purdue University. We welcome your comments, opinions, and questions.

Publication designed by Dawn Minns,  
Uppercase Design.

© 2010 by the College of Pharmacy at Purdue University. All rights reserved. No part of this publication may be reproduced or duplicated without the prior written permission of the publisher. While every effort has been made to ensure the accuracy of the information included in this publication at the time of printing, the publisher shall not be liable for damages arising from errors or omissions. Purdue is an equal access/equal opportunity university.

# THE PURDUE PHARMACIST

Fall & Winter 2010



**6**  
**Homecoming Weekend**  
Festivities

**7**  
**Classes of 1980 and 1981**  
30th Reunion

**8**  
**5 Students Who...**  
Spotlights Pharmacy

**9**  
**The College of Pharmacy**  
**Donor Honor Roll**

**20**  
**2010 College of**  
**Pharmacy Awards**

**22**  
**The New Purdue**  
**Doctor of Pharmacy**  
**Curriculum**

**28**  
**Preceptor Perceptions**  
Preceptor of the Year  
Outstanding Faculty Preceptor

**29**  
**Purdue's Forty Under 40**

**30**  
**Pharmacy Alumni**  
**Association (PhAA) News**

**18**  
Meet Our Kenyan Colleague: Mercy Nabwire

**19**  
2010 Employment Surveys

**21**  
Building a Pharmacy for Haiti

**21**  
Cardinal Health Student Leadership Conference

**26**  
Nuclear Pharmacy Alum George Hinkle

**27**  
8th Annual Garnet E. Peck Symposium

**27**  
Alumni Share Pharmacy Memorabilia

**32**  
Faculty News

**34**  
Alumni, Staff  
& Student  
Activities

**37**  
Class Notes

ON THE COVER:  
Dean Craig Svensson  
poses with Scott (BS 1980)  
and Sandra Brower at the  
President's Council Brunch  
on October 16, 2010.  
The Browsers have made a  
\$5.13 million planned gift —  
the largest gift in the  
College's history.

**2**

Planning  
for the  
*Future of*  
Pharmacy

THE 125TH ANNIVERSARY CAMPAIGN

# Planning for the *Future* of Pharmacy

## THE 125TH ANNIVERSARY CAMPAIGN



On Friday, October 15, 2010, approximately eighty alumni gathered at the Holiday Inn Select in Downtown Lafayette to celebrate the kick-off of the College of Pharmacy's Planned Giving Campaign, Planning for the Future of Pharmacy. Campaign Chair Marvin Richardson (BS 1980) served as emcee for the event. Alumnus Brian Holstine (BS 1987) and Professor Emerita Mary Losey (BS 1960, MS 1966) shared their philanthropic stories with the group, as did Richard Borch, Lilly Distinguished Professor and Head of Medicinal Chemistry and Molecular Pharmacology, who explained why he and his wife, Anne, have established a planned gift for the College.

Dean Craig Svensson presented information on current and future needs of the College, including scholarships, faculty support, chaired professorships, and graduate and professional awards. He outlined the steps that the College would be undergoing to tackle space issues as well as the need for updates to current facilities.

Richardson introduced Gordon Chavers, General Counsel with the University Development Office, and said a few words about Chavers' time at Purdue. "It is with mixed emotions that I announce the upcoming retirement of one of the most respected and loved members of our development team, Gordon Chavers. Gordon is a valuable and integral part of our development team, and I know I speak for everyone when I say how much we will miss his leadership, counsel, and friendship. In 35 years with Purdue, Gordon has held the same position. During that time, he has led Planned Giving and has helped to raise nearly three-quarters of a billion dollars for Purdue. His work has clearly played an enormous role in the success of our University, its faculty, and students." After such a heartfelt introduction, Chavers then addressed the importance of planned giving as an opportunity to impact the College without sacrificing assets during a donor's lifetime.

The College of Pharmacy is pleased to have several outstanding individuals serve on the steering committee for the campaign. The committee consists of Max Adams (MS 1968, PhD 1971), Ann Zehner Angle (BS 1974, MS 1989), JeanAnne Chaney (BS 1961), Brian Holstine (BS 1987), and Mark Varnau (BS 1956), with Marvin Richardson (BS 1980) serving as Chair.

Richardson, who also is a representative on the Purdue Foundation Council, comments about his decision to make a planned gift. "I believe that a great deal of success that I achieved in my career is directly related to the education and the pharmacy professors who encouraged me to achieve my goals early in life," he says. "Now, it is time to give back to students attempting to achieve their goals and to the faculty



Brian Holstine (far L), comments **“Between Pharmacy, the Glee Club, and my job with President’s Council, I’m not sure any student could have had a better experience at Purdue! It’s only fitting that I return some support back to the program.”** He poses with fellow donors and steering committee members (from L to R) Richard Borch, Mary Losey, Marvin Richardson, and JeanAnne Chaney.



Left: Mary Losey proudly flaunts her Forever Medal at the luncheon



Right: Alumni board members Pam Ringor (BS 1997), Tricia Lohr (PharmD 2005), and Kate Burke (BS 1974)

who support and encourage their dreams. I hope that my gift supports students and faculty who continue to improve the Purdue University College of Pharmacy program. I also hope it will lay the foundation for a new College of Pharmacy facility.”

When deciding to establish a planned gift to the College, Professor Emerita Mary Losey shared with us her story. Losey’s family originally came to West Lafayette when her father joined the faculty, but when he passed away between her freshman and sophomore years of college, her mother began working for Purdue. Her family’s income and all of her education thus came courtesy of Purdue. “I received scholarships to make it possible for me to attend Purdue, so I feel an obligation to share what I have saved with upcoming Purdue Pharmacy students,” says Losey. “Someone helped me, and now it’s my turn to help someone else. I believe we should share our success.” This is exactly why Mary chose to make a planned gift to the College. Although she supports Purdue through annual gifts, she wanted to make a larger contribution that would have a lasting impact, so she has designated her gift of the future to support pharmacy scholarships. “I hope my scholarship will help students lighten their very heavy financial loads.”

## CONSIDERING A PLANNED GIFT

The College of Pharmacy has a rich tradition of excellence, and we are positioned to continue to be leaders in the education of pharmacists and pharmaceutical scientists throughout the 21st century. It is, however, through the goodwill of our donors that we are enabled to reach these goals. Planning for the future, both academically and economically, is crucial to our success, and one way you can assist us in filling tomorrow’s prescription is by making a planned gift today.

A planned gift can provide numerous opportunities such as scholarships, faculty support, chaired professorships, graduate awards, and professional awards. In honor of the 125th Anniversary of the College of Pharmacy, we challenge our alumni to help us reach our goal of 125 new planned gifts totaling \$10 million by June 30, 2013. By achieving this objective together, we can assure the profession of pharmacy will succeed well into the future.

There are several ways you can support the College and receive significant tax and financial benefits. We invite you to learn how you can complement your personal financial portfolio by visiting <http://www.pharmacy.purdue.edu/pg>. You may also contact Christopher Smith, Director of Advancement, at [jcsmith@purdue.edu](mailto:jcsmith@purdue.edu) or (765) 494-0501.

## Why Planned Giving Works for Us

MAX (MS 1968, PhD 1971) & MERGIE ADAMS



*“Mergie and I feel that it is important to make contributions to those organizations whose aims and objectives are consistent with the advancement of knowledge and the improvement of the human condition. Certainly, the efforts of Purdue University are directed toward those ends. Additionally, because we were the direct beneficiaries of the educational opportunities provided by the Purdue College of Pharmacy, we believe that making gifts to the College is a way of expressing gratitude for the important contributions the College made in helping us to fulfill some of our life goals. We anticipate that these gifts will, in turn, help others to achieve some of their dreams and that the continued efforts of the College will improve the lot of mankind.”*

*Planned Giving is a wonderful way of providing estate gifts to universities and other organizations that one finds worthy of contributions. Frankly, we are surprised that more people do not include educational institutions, charities and other not-for-profit organizations in their estate plans. There are a variety of ways to do this. We chose an irrevocable Charitable Remainder Unitrust (CRUT). This vehicle provides for a tax deduction in the year in which it is established and also delivers a percentage of the earnings to the Trustees (us) on a quarterly basis. The remainder of earnings are added to the principal which goes to the institution upon the death of the Trustees.*

*I hope that my gift will allow future students to have a wonderful experience while they are at Purdue—learning not just pharmacy but how to work with others and how to serve the world in which we live.”*

*– Max Adams*

# Browers Make Largest Gift in College's History

With a salute to a past mentor and a gift to future students from the bounty of his current professional success, Scott Brower (BS 1980) exemplifies the offerings and opportunities of the nuclear pharmacy program in Purdue's College of Pharmacy. Scott and his wife, Sandra, have made a \$5.13 million planned gift—the largest gift in the college's history—to support the professional and postgraduate programs in Nuclear Pharmacy.

Proceeds from the gift will benefit both the nuclear pharmacy program and the *Stanley M. Shaw Fund for Nuclear Pharmacy* in honor of the college's professor emeritus. Shaw, who retired in 2004, served as Brower's instructor, advisor, and mentor in the niche of nuclear pharmacy.

A Shaw award will be given to students who pursue the master's degree in nuclear pharmacy or after they attain the PharmD degree. The award is also for students who intend to gain knowledge and experience in nuclear pharmacy through additional study or special practice experience. A second- or third-year PharmD student with an interest in nuclear pharmacy also will be considered for the scholarships.

Though the actual benefits of Brower's gift will not be realized for many years, Christopher Smith, the college's Director of Advancement, says it already yields value. "This generosity connects the College's past and present with future generations pursuing an important specialty within the pharmacy profession," Smith says. "And there is no way to calculate the example it sets for others, while making a testament to Scott's loyalty to Dr. Shaw, the profession, and Purdue."

Partial reprint contributed by *Leadership Magazine*, Fall 2010, with reporting by Grant Flora. To read the article in its entirety, please visit [www.purdue.edu/giving/documents/LeadershipFallSP.pdf](http://www.purdue.edu/giving/documents/LeadershipFallSP.pdf). An article about Scott Brower also appeared in *The Purdue Pharmacist* (Spring & Summer 2010) on page 20 which can be viewed at [www.pharmacy.purdue.edu/advancement/publications/pharmacist/v86\\_n1.pdf](http://www.pharmacy.purdue.edu/advancement/publications/pharmacist/v86_n1.pdf).

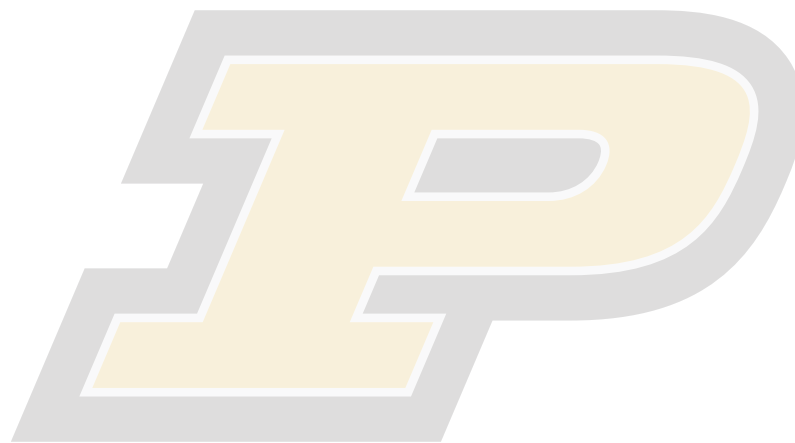


*"My wife, Sandy, and I want to make a difference with respect to the nuclear pharmacy program at Purdue. We believe our planned gift will further help Purdue accomplish its goals and will help give other pharmacy students similar opportunities that I was given while attending the College of Pharmacy at Purdue. I would hope that our planned gift will help the College of Pharmacy retain and solicit the very best of educators and attract students into the field of nuclear pharmacy as well!"*

– Scott Brower



# Homecoming Weekend Festivities



The College of Pharmacy held its 4th Annual Student and Alumni Chili Supper on Friday, October 15, 2010. Over 250 students and alumni enjoyed great food and fellowship. The Purdue Homecoming parade began immediately following the supper, allowing guests to enjoy this wonderful Purdue tradition.

The College held its annual tailgate the following morning. With perfect weather enticing crowds, we hosted over 300 Pharmacy alumni, faculty, staff, and students. All enjoyed great food and fun in the Pharmacy tent.

Several pharmacy student organizations were on hand at both the chili supper and tailgate to sell pharmacy items. Kappa Epsilon, PSSHP, Society of Nuclear Pharmacy, NCPA, and Phi Lambda Sigma sold t-shirts, candied apples, homecoming mums, scarves, and drinking glasses.

The Pharmacy classes of 1985, 1995, 2000, and 2005 celebrated their class reunions at Homecoming this year. Alumni reunited with former faculty and classmates at the tailgate, and retired pharmacy faculty members Drs. Patrick Belcastro and Nick Popovich also visited the tent. The weekend celebration ended with a Boilermaker win over Minnesota!



*Students of Multicultural Programs served as hosts and hostesses for the chili supper*



*The Pharmacy tent welcomed guests throughout the weekend*



*Pharmacy Class of 1985 alumni gather at the tailgate*



## Classes of 1980 and 1981

# 30th Reunion

Classmates from the classes of 1980 and 1981 gathered during November 12-13, 2010 in celebration of their 30th reunion. Several classmates started off the weekend with a round of golf at the Birck Boilermaker Golf Complex. On Friday, guests were invited to attend the Varro E. Tyler Distinguished Lectureship in the morning, followed by roundtable discussions with Pharmacy students after lunch.

A tour of the Pharmacy building began in the G-16 Pharmacy Practice Laboratory where fellow 1981 classmate Jane Krause, Clinical Associate Professor of Pharmacy Practice, shared how the facilities have changed since their time at Purdue. Mary Losey, Faculty Emerita, welcomed the students whom she taught back to campus and reminisced about her time as instructor. Even Elizabeth Chalmers, who served as advisor of Kappa Epsilon with Losey, made an appearance and welcomed guests. The tour continued through the building where Faculty Emeriti Patrick Belcastro and Stan Shaw, as well as current faculty Stan Hem and Steve Byrn, greeted their former students. Each gave a brief refresher on the courses they would have taught the returning classes. The evening was capped off by a reunion dinner with entertainment provided by the Purduettes. Reunion chairmen Marv Richardson (BS 1980) and Mike McMains (BS 1981) gave an overview of the reunion as well as an update on the Class of 1980 and 1981 fundraising project, the Capital Project Fund.

Alumni gathered at the Birck Boilermaker Golf Complex Pavilion the following morning for a Pharmacy tailgate prior to the Purdue vs. Michigan football game. Dave Smiley (BS 1980) said it best after the weekend festivities came to an end. "It was very enjoyable seeing all of you and sharing a little about the path we took 30 years ago. As Marv and Mike said, 'we are all better people and have achieved success because of our days with each other at Purdue.' Don't get too busy making a living and forget about making a life. Give back, encourage those who did not make it back, stay in touch with each other, and all the best."

### The Capital Project Fund

At the completion of celebrating its 125th anniversary as a program, the College of Pharmacy is setting its gaze ahead and planning to meet the needs of the future. A key component of this plan is the development of new and expanded facilities to house the people and programs of the College. The classes of 1980 and 1981, in honor of their 30th reunion, have taken it upon themselves to initiate a gift project to support this endeavor.



*Reunion attendees pose after dinner at the Holiday Inn Select in Lafayette*

"It is hard to believe that it has been over 30 years ago that we were struggling through not only tough classes at the Purdue Heine Pharmacy Building, but also trying to balance our social lives and figure out how to become grown-ups," comments Mike McMains. "Today, we have succeeded in our careers and have touched the lives of countless people because of the exceptional education that we received from Purdue. Any way that you look at it, you have to conclude that Purdue prepared us well. Now, our Alma Mater needs our help. Today's Purdue Pharmacy students and faculty are spread across eight different buildings on campus. The Heine Building is undersized and outdated. This is not only a hardship for the students and faculty, but it makes it very difficult to attract and retain quality professors. As a result, unlike when we were at Purdue, Purdue Pharmacy no longer is ranked number 1 or 2 in the nation. If we can raise \$125,000 of seed money for architectural design and planning, the University will put building a new Pharmacy Building in the queue for state funding. We have raised over \$100,000 from our classmates to date. I respectfully submit that there is not one of us who could not afford to pick up our check books and help with the effort. Candidly, I owe Purdue a lot more than I can ever repay. I hope you will join me, Marv Richardson, and many of our classmates to help make a difference for the next generation of Purdue Pharmacy students."



*Reunion attendees tour the Pharmacy Practice Laboratory*

# “5 STUDENTS WHO...” *Spotlights Pharmacy*

Purdue University’s website launched a new segment entitled “5 Students Who...” Each month, the stories of five students who share a common theme are highlighted. Out of several students featured thus far, the College of Pharmacy is proud to claim two of these students as our own. You can check out the various students highlighted for themes ranging from making a global impact and giving back to studying abroad and serving our country at [www.purdue.edu/fivestudents](http://www.purdue.edu/fivestudents).



Danielle Carpenter shows off her SOYTABS (Photo by Andrew Hancock)

**Danielle Carpenter**, a recent Pharmaceutical Sciences and Agricultural & Biological Engineering graduate from Plainfield, Indiana, was featured in “5 Students Who Invent” this past spring. Danielle has made a name for herself with her SOYTABS invention. Many tablets are made in a five-stage process that includes wet granulation and drying. Carpenter’s SOYTABS is a process as much as a product, which creates tablets out of soy in four steps where roller compaction replaces the wet granulation and drying stages. The roller compaction step is a 91 percent energy savings and the soy material is a less expensive and more bio-friendly material than what is currently in use.

SOYTABS won the 2010 Soybean Innovation Competition in March of 2010. “There are four members of our team, and we wanted to do something that would involve both engineering and pharmaceuticals,” she says. “We’re really excited about the possibilities from here.” The team won \$20,000 and the ear of large companies that might be interested in commercializing the product. More information about Danielle can be found at [www.purdue.edu/fivestudents/invent/carpenter.html](http://www.purdue.edu/fivestudents/invent/carpenter.html) and [www.purdue.edu/newsroom/purduetoday/general/2010/100421\\_5StudentsDC.html](http://www.purdue.edu/newsroom/purduetoday/general/2010/100421_5StudentsDC.html).

**Beth Neumann**, a Pharmacy student from Zionsville, Indiana, was featured in “5 Students Who are Budding Boilermakers.” Arriving at Purdue with a Trustees Scholarship, as well as music scholarships, she says that music is “pretty much my life.” She plays flute and piccolo and hopes to perform in the marching band, concert band, and winterguard. Purdue definitely has an outstanding music program, but it was also her love of science that made Purdue the right choice. Her parents, Jill, a Purdue alumna (BS 1984) and a pharmacist at Riley Hospital for Children, and Steve, an internal medicine physician at Indiana University Medical Center, have been an inspiration, from her love of music to pharmacy. “They inspire me on many levels and have provided me a background in science. They’ve always encouraged me,” she says.

Beth is interested in pursuing a career in pharmacy and pharmacogenomics, which is the study of how genetic variations determine a person’s response to drug therapy. Her complete interview can be found at [www.purdue.edu/fivestudents/budding\\_boilermakers/neumann.html](http://www.purdue.edu/fivestudents/budding_boilermakers/neumann.html).



Beth Neumann poses outside of the Heine Pharmacy Building (Photo by Andrew Hancock)

The College of Pharmacy

# Donor Honor Roll

Fiscal Year 2010



The generosity of our donors enhances the overall success of our programs and future alumni at the College of Pharmacy, and we thank you for your continued support. The following gifts were received during July 1, 2009 through June 30, 2010.

The College of Pharmacy strives to accurately recognize our donors. If for any reason you feel that your name has been omitted or listed incorrectly, please contact Christopher Smith, Director of Advancement, at (765) 494-0501 or [jcsmith@purdue.edu](mailto:jcsmith@purdue.edu).

We invite all of you to participate at the appropriate giving club level. Every gift counts, and we thank each and every one of you for your support.

## Individual Donors

### **Pinnacle Society (\$10,000 & Above)**

Anonymous  
Albert & Wendy Alderman  
James Appino  
Gilbert & Gwen Banker  
Richard & Anne Borch  
Robert & Sondra Brown  
JeanAnne & James Chaney  
Allen & Lee-Hwa Chao  
Glenn & Mary Lou Claybaugh  
Gary & Peggie Dolch  
Charles & Madonna Flemming  
Thomas & Beverly Gerding  
Karen & Thomas Jeppson  
Robert & Nancy Lipper  
Marvin & Melanie Richardson  
Robert & Arda Saute  
Steve & LeeAnn Taglienti  
Virginia Tyler

### **Mortar & Pestle Society (\$5,000-\$9,999)**

Mary Baker  
Don and Sue Barrick  
Joanne Barrick  
Jean & Frank Battaglia  
Henry & Sherrill Bryant  
Ang & Jeannine Carnaghi  
John & Polly Derr  
Alton Johnson  
Bruce Lieberman  
Gerry & Karen Migliaccio  
Steven & Lisa Nail  
Kinam & Haesun Park  
Katie MacFarlane & Ned Phillips  
Priscilla & James Potter  
Rick & Deanna Rondinelli  
Jeffrey & Gail Rudolph  
Debra St. John Mishler  
John & Tara Voliva  
James & Linda White  
Bernard & Judith Williams

### **Dean's Club Inner Circle (\$2,500-\$4,999)**

Stanley & Charlotte Beck  
Marianne Billeter  
Judith Blank  
Frank & Judith Darnell  
Susan & Michael Fellers  
Edmond Fennell & Patricia Hoffman  
Serena & George Ford  
Rick & Jane Gerteisen  
Eugene & Barbara Hamlow  
Jeffrey & Janet Hatfield  
Mary & William Kuhn  
Susan Martin  
Wayne & Helen McKeahan  
Thomas & Mary Ortyl  
Shirley Paddock & Greg Riffe  
Yang-Chun Park  
Neil Partridge  
Kappana & Nancy Ramanandan  
Gregg & Jeanne Richmond  
Nancy Sikora  
Julian & Patsy Stowers  
Craig & Sue Svensson  
Kara Weatherman  
Rae Willis & Candie Oldham

### **Dean's Club Executive Level (\$1,000-\$2,499)**

Steven & Jill Abel  
Max & Mergie Adams  
Janet & James Amy

Christopher Anderson  
Heidi Anderson  
Robert & Sandra Anderson  
Thomas & Cynthia Andres  
Jennifer & Derek Asay  
Eric & Loretta Barker  
James & Karen Bedford  
Richard & Betty Bellairs  
Quent & Margaret Besing  
Karin Beymer  
Curtis & Marilyn Black  
Thomas Boehning  
Holly & William Bonsignore  
Randall Boris  
Joseph Borowitz  
Maria Bowman-Horner  
James & Jean Boylan  
James & Darlene Branham  
Scott & Sandra Brower  
Sharon Brown  
George & Marguerite Brueggemann  
Thomas & Miriam Bryan  
Nancy & William Busso  
Sally & Stephen Byrn  
Keith & Cheryl Carter  
Elizabeth Chalmers  
Todd & Debra Chermak  
John Cowan  
Herman Cantrell & Joann Data  
Craig & Nancy Davis  
Lester Davis  
Miles & Sandra Davis  
Frank & Beverlee Deardorff  
Richard & Rosemary Deardorff  
Ross & Carol Deardorff  
Richard D'Elia  
Christopher & Theresa Dimos  
James & Phyllis Doluisio  
Nikki & Mark Donathan  
Michelle & Scott Duncan  
Susan & Keith Fahler  
Kandy & Mark Fitch  
Alan & Marilyn Fites  
Brian & Toni Frost  
Dennis & Leslie Gardner  
Valerie & John Gaylor  
Mary & Richard Geib  
Beverly Genaro  
Keith & Crystal Gillette  
Nicole Gilmore  
Virginia & Charles Goodall  
Marilyn Haberte  
Pamela Habrowski  
Phillip Harris  
John Heimlich  
Brian & Betty Ann Henderson  
George & Cindy Hinkle  
Gregory & Sheryl Hockerman  
Vicki & Richard Hoffman  
Gary & Olesia Hollenbeck  
Andrew & Richelle Hudson  
Bruce & Patricia Hufford  
Keith & Juanita Johns  
Kenneth & Jean Marie Johnson  
Ralph Johnson  
James & Debra Kehrer  
Norma & Dennis King  
Christopher Korherr  
George & Mary Kucka  
Louis & Karen LaRowe  
Robin & Nathan Lewis  
Nadine Lindley  
Mary Losey  
Marc & Judy Loudon  
Sheryl Lowenhar  
Patrick & Marjorie Madigan

Robert & Patricia Maile  
William & Leanne Malloy  
James & Kathleen Mannion  
Phillip & Ann Manship  
Richard & Susan Markham  
Rebecca & Philip Marshall  
Holly & Jia Mason  
Dennis & Linda McCallian  
Jack & Barbara McCoy  
Kimberly & Jeffrey McDonough  
Michael & Cheryl McMains  
Michael & Elaine McNear  
Paul & Kathryn McWilliams  
Kathy & Craig Michael  
Gary Millikan  
Craig & Julie Money  
Judith & James Mowry  
James & Susan Munden  
Don & Ginger Newman  
John & Janet Nine  
Charles & Barbara Paget  
Angela & Sunil Patel  
Deborah & Anthony Perona  
Albert & Cynthia Peyton  
Nikki & Casey Price  
Kelly Railing  
William & Diane Randolph  
James & Diann Robbers  
Jill & Richard Robinson  
Charles & Jane Rutledge  
Sumon Sakolchai  
Denise & Bobby Sandage  
Charles & Sarah Sanders  
James & Susan Sanger  
Beth & Jerry Schilling  
Steven & Catherine Scott  
Robert Shingler  
Michael & Vicki Sievers  
Eric & Diana Smith  
Wayne & Deborah Smith  
Jon & Aimee Sprague  
David & Donna Steenbarger  
Lawrence & Sue Swanson  
Stephanie Sweetana  
Lillian & James Thomas  
James Tisdale  
Stanley & Terrylee Turnipseed  
Samuel & Ellen Vowells  
Gerald & Bonnie Wannarka  
Cynthia & Kevin Weil  
James & Linda Wesley  
William & Arlene Wheeler  
Joseph & Sharon Wilczynski  
Roger & Cyndi Williams  
Shirley & Tad Wilson  
Louis & Eleanor Windecker  
Alisa & Lance Wright  
Wu-Huang & Li-Jung Yang  
James & Jean Yeager  
Daniel & Mary Zurawski

### **Dean's Club (\$500-\$999)**

Brenda & Eric Acker  
Ann Angle  
Randy & Margaret Asmus  
Kenneth & Sharon Bassler  
James Beal  
Diena & Jay Beyer  
Janice Biederman  
Margaret Bilkert  
Jane & Richard Boggs  
Gerald & Judith Bruno  
Richard & Susan Brychell  
Catherine & Morgan Burke  
Carolyn & Gregory Cagnassola

Jennifer Chalmers  
Joseph Clark  
Terrance & Elizabeth Clark  
Brian Cox  
Alice & Fred Croner  
Wayne & Patricia Culley  
Steven & Carlene Cummings  
Mark Cushman  
Lorraine Davis  
Vicki Demoret  
Matthew Dierks  
Gary Dominy  
Johnnie & Diane Early  
Brooke Fair  
Richard & Joan Faust  
Dan & Mary Fisher  
Gary & Janet Fourman  
Beth Frey  
George Fuller  
Donna & Lionel Galerman  
Barbara Garing  
Deborah & John Gentry  
James & Mary Goshert  
Diane & Donald Gotsch  
John & Joan Griffin  
Judith & David Hale  
John & Vicki Hardin  
Keith Harvill  
Harry Hicks  
Candice Hill  
Linda Hobbs  
John Horner  
Carl & Janet Hudson  
Bonnie & Gary Jones  
Alexander & Robyn Kelly  
Scott & Amanda Keltch-Senger  
Steven & Wendy Klohr  
Susan Kloss  
Peter Koinange  
Linda & James Krampen  
Matthew & Candice Kuntz  
Winifred Landis  
Barbara & Francis Lane  
Wade & Candice Lange  
Edward & Linda Langston  
Allan & Karen Loeb  
Rosemary Long  
Amy Maxberry  
Susan Metzger & John Hadley  
Cynthia & Christian Meyer  
Amy & Anthony Mihelich  
Yana & Merrill Mille  
John & Erin Miller  
Laura & Nicholas Miller  
Donald & Naomi Moore  
Karen & David Ogden  
Linda & John Paczolt  
Douglas Pew  
Gregory & Sheila Pierce  
Beatrice Railing  
Diane Rammelsberg & Ralph Freye  
Janet & Robert Redmond  
Tamara & Thomas Richardson  
David & Gail Riese  
Rae & Richard Roley  
Ronald & April Rosich  
Teresa Rouse  
Paul & Cynthia Sale  
Bradley & Jean Schantz  
Mary & David Scheible  
Craig & Carolyn Schnell  
Sue Schnepf  
Terry & Donna Schwinghammer  
Laura & Robert Scott  
Douglas & Glenda Scudder  
Robert Sepelyak

Virginia Shen  
James & Robin Silver  
Brent & Dawn Sinclair  
David & Peggy Smiley  
Christopher Smith  
Tracy & David Speer  
Lou & William Spry  
Robert & Lorraine Sturwold  
Blaine & Shirley Sutton  
Jeremy & Kathryn Bonnet-Thain  
Mark & Cheryl Thompson  
Alfonso Tobia  
John Turchi  
Ernest & Mary Ann Vibbert  
Mary Wahlman  
Janet Warren  
Norvin & Gwen Wilson  
Bruce Winters  
Robert & Kathleen Wittgen  
Angela Wojslaw  
Joanne Murphy-Woods  
Sue Wright  
Victor Yanchick  
Thomas & Welma York

**Second Century Club  
(\$250-\$499)**

Jeffrey & Ann Albrecht  
Margaret & Eric Anderson  
Elayne Ansara  
Mary & James Arnold  
Virginia & Dalton Baysden  
Melanie & Ronald Baysinger  
Ronald & Pat Beck  
Steven & Nancy Becker  
Kathleen & Thomas Bemenderfer  
Kelly Beres  
Jeffery Bierwagen  
Michael Bigler  
Joleen Blacksten  
Mary Bohren  
Jeffrey Bolin & Carol Post  
Eric Bou & Gretchen Velasco  
Stephanie & Adam Brazus  
Robert Britt  
Valerie Brock  
Joseph & Lois Brown  
Brian & Bernadette Brown  
Jennifer Bryant  
Gary Buck  
Cherie & Jerry Burgdorf  
John & Diana Bush  
Saladin Carter  
Leroy Cataldi  
Jane Chavers & James Hubner  
Cliff & Vanessa Cleveland  
Ryan & Melissa Cohlhepp  
Brad Cooper  
Robert Daly  
Richard Dansereau  
Sharon Davis Ninno  
James & Nancy Day  
Christopher & Susan Dick  
Carol & Robert Dobis  
Joseph & Victoria Dwenger  
Kelly & Vernee Eads  
Karen Edwards  
Anne & Paul Eggers  
Lori & Kevin Eikenberry  
Brian & Angela Elsten  
Renee & Rick Embrey  
Tamara Evans  
Barry Eversole  
William & Ajibola Fat-Anthony  
Joy & Roger Fick  
Jon & Nancy Finley  
Catherine & David Fisher

Nancy & Edward Fitzgerald  
Herbert & Susanne Fletcher  
Ian Foldenauer  
Robert & Cheryl Franz  
Larry & Nanette Fredericks  
James Freudenberg  
Gregory & Sandra Gabor  
James Galloway  
Holly & William Gentry  
Frank & Joan Goodhart  
Ashok & Manisha Gore  
Mark Green & Carla Mathias  
Marcelyn & Troy Hagan  
Herbert & Margaret Halley  
Sophia Hardin  
Adam Harty  
Barbara & Robert Hayes  
Douglas & Kelly Henry  
Gerard & Jacqueline Hokanson  
Christine Holtman  
Dorothy Humma  
Randall Hunter  
Myrlen Hunter  
Ann Hynds  
Christine & Craig Itt  
Karen & Darryl Ivanson  
Gary & Linda Jacobi  
Mildred Jarvis  
Jackie Jimerson  
Jane & Mark Johnson  
Lisa Kampschmidt  
Tyler & Molly Keith  
Judith Kepler  
Mary & Frank King  
Ricky & Mary King  
William & Dolores Kinnard  
Bernadette Koh  
Theresa Kolczak  
Elizabeth & Brian Kremer  
John & Connie Kuykendall  
Robert & Brenda Larew  
Marvin & Judy Larue  
Linda & Richard Letherman  
Mary Loftus  
Lois Maickel  
Kevin Marhenke  
Denise Marthakis  
Dena & Gary Marvel  
Alice & Christopher McCulloch  
Robert & Cheryl Merchant  
Lonnie & Charlotte Middlesworth  
Mark & Marsha Millikan  
Staci-Marie & David Norman  
Michelle Nuss  
Jonathon & Joann Parker  
Sarah & Andrew Pierce  
Maureen & Thomas Pietryga  
Richard & Marianne Pogue  
Rolland Poust  
Paul Price  
Steven & Diana Rains  
Kristi & Matthew Reimer  
John & Nancy Rhodes  
Joyce & Carl Rinke  
Jeffrey & Kristiana Roberts  
Jean-Christophe Rochet  
David & Peggy Rokosz  
Mary Roswarski  
Benjamin & Jennifer Whittington-Rotz  
Lawrence & Lynette Sage  
Dwight & Julia Schaefer  
Patricia Schettino  
Karen & Thomas Schneider  
Kenton & Sally Schreck  
John & Jenifer Schreiner  
Virginia Scott  
Roberta Secrest

Dhiren Shah  
Matthew Shambry  
Lori & Kevin Shelley  
Van & Jo Sherry  
Edward Shinabarger  
Stephen & Carol Simmons  
Kyle Sloan  
Melinda & Richard Sloan  
Deborah Smith  
Mary Ann Smith  
Robin & Cindy Southwood  
Thomas Steele  
Anita & Jay Stevens  
Kristen Stier  
Vivian Stokes  
Randy Swonder  
Elizabeth & Jack Taulman  
Dirk Teagarden  
Dennis & Donna Terry  
Bradley Thomas  
Barbetta & Robert True  
Heidi Vint  
Nancy & Robert Waltz  
Julia Ward  
Michelle & Martin Waszak  
Val Watts & Julia Chester  
Barbara Weber  
Nancy & Thomas Langschied  
Laura & Kenneth Wilson  
Gary Wolfe  
Alan & Carla Wolfgang  
Shawn & Stephen Wood  
Traci Wozniak  
Harold Zallen  
Jeffrey & Carol Zobel-Teague  
Jerry Zuck  
Thomas & Jane Zuck

**RX Select Club  
(\$100-\$249)**

Frank & Phyllis Abbott  
Bruce & Georgine Abrahams  
Cara & Joseph Acklin  
Amber & Todd Adamczyk  
Edgar Adams  
William & Janet Albitz  
Coleen & Robert Albricht  
Audrey Alderfer  
Kyle & Lester Allen  
Robert & Sharon Anderson

Robert Anderson  
William Andrus  
Valerie Anselmo  
Keith & Lynne Apple  
Oscar Araujo  
Kathryn Armstrong  
Samuel Arnett  
Robert & Judith Atlas  
Douglas & Karen Ausenbaugh  
Michael & Rita Ayres  
David Bailey  
Matthew Bailey  
Gail Baldwin  
Julie & Jonathan Ballmann  
Ralph & Eleanor Banziger  
Angie Barchak  
Brenda Barker  
Matthew Barner  
Michael Barnett  
Gary Barr  
Paul & Susan Cartier-Barrett  
Tatiana Bartolucci  
Robert Bean  
Jack Belfuss  
Amanda & Eric Benedetti  
David Beutel  
Snehal Bhavsar  
Carol & Frank Bieda  
Dale Bikin  
Josephine Billington  
Carol Birk  
Kurt & Joanne Black  
Helen Blessinger  
Brenda & Andrejs Bocek  
Dale & Carol Boing  
Daniel Bollinger  
James & Jill Bonifer  
Linda Boothe  
Michael & Tracy Born  
John Bossaer  
Lori Botkin  
Nancy Bowen  
Keith Bowen  
Lee Bowman  
Edgar Adams  
Ernest Bradley  
Beth Bready  
Susan Bresnahan & Ray Vanderby  
Robin Brewster  
Michael Brier



## Individual Donors

Sheryl Bringman  
 Ray Broderdorf  
 Marisa Broderdorf  
 John Brown  
 Mark Brown  
 Oliver & Geneva Brueck  
 Monica Brunelle  
 Ann Brunner  
 Kenneth & Nydia Bryan  
 Dennis & Jane Buck  
 Charles & Rebecca Bultinck  
 Ronald & Rosa Burkhart  
 Lyman & Libby Busard  
 Stephen & Nancy Byfield  
 Dorothy Byrn  
 Janice Cacace  
 Timothy & Yvonne Cagney  
 Timothy & Connie Calmer-Anderson  
 Jennifer Campbell  
 Kevin & Susan Campbell  
 Nancy & David Campbell  
 Katherine & Joshua Canup  
 Stephanie & Joseph Carcione  
 Randal & Carla Carie  
 Katherine Carney  
 Leslie Catrett  
 Christine & Thomas Cavinder  
 Shieh-Sheing & Shwu-Mei Chen  
 Shirley & Yun-Leei Chiou  
 Dawn Christmas  
 Kathleen Cimakasky  
 Lloyd & Patricia Claybaugh  
 Stephen & Rebecca Cline  
 David & Carole Coffman  
 Robert Coican  
 Samuel & Carolyn Coker  
 John & Maria Colaizzi  
 Jane Conard  
 Cynthia & Patrick Conley  
 Stefanie & Aaron Conley  
 Mary Connor  
 Martin & Lisa Cook  
 Sara & Dennis Cowley  
 Thomas Crabill  
 John & Rebecca Craig  
 Mary Lee & Stanley Craig  
 Helen & Christopher Creagan  
 Elaine Cue  
 Jill & Stephen Cutler  
 Quinn & Roberta Czosnowski  
 Marcia Daily  
 Esam & Najwa Dajani  
 Vytautas Damasius  
 Justina Damiani  
 James & Marilyn Dammon  
 Natalie Danielsson  
 Diane & Michael Darragh  
 Elizabeth Darrah  
 Judith & Arthur Davenport  
 David Davis  
 Christopher & Carly Day  
 Stephen Day  
 Debra & Karl DeBord  
 Jeffrey & Tamara Decker  
 Jerome & Kathleen Degitz  
 Dana Delaware  
 Susan & Benjamin Dennett  
 Barbara Derschang  
 William Detert  
 Kenneth Dibble  
 Tony Diep  
 Malisa & Andrew Dills  
 Michael & Christine DiNatale  
 Pamela Dishman  
 Khanh Do  
 Melanie & Paul Dodd  
 Raymond & Myra Dohmeyer



Carol & Douglas Doorenbos  
 Janice & Cleland Douglass  
 Raymond & Barbara Doyle  
 William Driscoll  
 Karen & James Durrant  
 Jennifer Eads  
 Robert & Ruth Eaton  
 Kathryn Eaton  
 Dawn & John Eckerly  
 Elyse & Jonathan Eessalu  
 Jennifer Elizondo  
 Wayne & Sandra Engdahl  
 James Enyart  
 Stacy Eon  
 Lisa Epperson  
 Ashley Erny  
 Gregory Even  
 David Ewbank  
 Debra & Steven Ewing  
 Frederick Fagen  
 Angela Falzone  
 Timothy & Mary Anne Fath  
 Mary Fennig  
 William & Deborah Fenstermaker  
 Nancy Jean Fey  
 Derek Fields  
 Thomas Fite  
 Michael & Marsha Flora  
 Frederick & Julie Foland  
 Monica & Christopher Foye  
 Michael & Sandra Frankovich  
 Charles & Ann Frazier  
 Thomas Furnish  
 James & Julie Gackenheimer  
 Melinda & John Gadberry  
 Jessica Gael  
 Juliann Gajewski-Bradish  
 Cynthia & Kent Gambrel  
 Natalie & David Gardner  
 Alan & Sharon Gates  
 Diane & Ronald Gburek  
 Richard Gelzleichter  
 Isaac Ghebre-Sellassie  
 Robert & Janice Gibson  
 Laura Gibson  
 Dennis Gilliland  
 Donna & Larry Giroux  
 Bradley & Stephanie Given  
 Gottlieb Glauninger  
 Scott Glosner  
 Keith & Jean Glotzbach  
 Walter Gloyer  
 Lori & Paul Godby  
 Bradley Goedecker  
 Jude Gorski  
 Tina Graham  
 Bernard Graham

Beth Greck  
 Robert & Pamela Green  
 Jacqueline Griswold  
 Michael & Lynn Gross  
 David & Karen Grote  
 Sara Gullstrom  
 Imre Gutay  
 Lydia & Andrew Haan  
 James & Mary Haas  
 Frank Habermel  
 Walter & Patti Hadley  
 Teresa & Kris Hall  
 Janice Hallenbeck  
 Christine Hamacher  
 Jane Hammock  
 Samuel Hamod  
 Bruce & Mary Hampton  
 Bruce & Emily Hancock  
 Lynne Hart  
 Stacey & Eric Hart  
 Carl Hayes  
 Kathleen Hayes  
 Carolyn Hays  
 Leslie Henry  
 Maureen & Larry Herring  
 Ann Hershey  
 Allen & Barbara Heyd  
 Shirley Heybog & Kenneth Cradler  
 Jodi Hicks  
 Michael Higgins  
 Michael & Carol Hilton-McKiernan  
 Mary Hinkle  
 Jeri & Gregory Hippensteel  
 Robin Hipps  
 Sandra Hoel  
 Dennis & Barbara Hogan  
 Kimberly Holdener  
 Sally & George Holl  
 Kenneth & Margaret Holland  
 Traci Holling  
 Linda & James Hollis  
 Brian & Elaine Holstine  
 Jean Horner  
 Bernie Howard  
 Rosemarie Howard  
 Michael & Amanda Hudson  
 Sandra Hughes  
 Yuhua Hui & Hui-Yun Wang  
 Joshua & Sarah Hull  
 Kyle & Anne Hultgren  
 John & Wilma Hultman  
 Raymond & Sarah Hynds  
 Martha Ikeda  
 Davina & Fevzi Ilgin  
 Lara Imai  
 Roger Ings  
 Paul Inwood

Gary & Sharon Isom  
 Jennifer Jackson  
 Salvatore & Nancy Jackson-Schiciano  
 Carol & Orval Jacobsen  
 Donald & Janet Jacoby  
 Andrew & Patricia Jancosek  
 Patricia Jehring  
 Martha & Ronald Jelski  
 Charles Jinks  
 Donald & Linda Johnsen  
 Leslie Johnson  
 Michael & Sheryl Johnson  
 Clarion Johnson  
 David Johnson  
 Robert & June Johnsonbaugh  
 Robert & Sharon Kamman  
 Robert & Kathleen Kania  
 Ellen Keller  
 Mary & Matthew Kelm  
 William & Doris Kendall  
 Estell & Mary Kesling  
 Michele & Cory Kihlstrom  
 John Kilarski  
 Marshall Kitterman  
 Janice Kleppe  
 Kenneth Koldewey  
 Kimberly & Joseph Koss  
 Richard & Janalene Kouns  
 Kelli Kovak  
 Steven Kozak  
 Debra Krasnow  
 Jane Krause  
 Diane Kreisher  
 Charlotte & John Krukenberg  
 Marion Kuczanski  
 Arthur & Donna Kunz  
 Patricia & Pierre LaBerge  
 Monina Lahoz  
 Elizabeth & Vernon Lambricht  
 Pamela Lane  
 Laura Lane  
 Gerald & Carol Lange  
 Kira Larimore  
 Jessica Larva  
 David Lawrence  
 David & Traci Leburg  
 Deanna & Edmund Leinbach  
 John & Sharon Leiter  
 Gary & Lynn Leshner  
 Valerie & Matthew Lesniak  
 James Lile  
 Brian & Jessica Lindvahl  
 Craig & Maria Locke  
 Tricia & Jason Lohr  
 Barbara Lotter  
 Richard Lowe

Malgorzata Ewa Lozinska  
 Jeffrey Luce  
 Sally & Peter Maier  
 Katherine Malloy  
 Ralph Manglass  
 Roger Mapes  
 Thomas & Kathryn Marcotte  
 Bonnie & Randy Marcy  
 Laura Markut  
 Jules Marx  
 Carolyn Mason & Jim Johnson  
 Beth & Jeffrey Mason  
 Donald Mason  
 Constance Mattingly  
 Leah Maxwell  
 Philip & Ginny Mayer  
 Janice & Stephen Maynard  
 Adrienne Mayorga-Villarreal  
 Kelly McCarthy  
 Justin McMenamy  
 Jill & Robert McCampbell  
 Mark McCurdy  
 Monika McDougal  
 Donna McElwee  
 Michael & Sharon McFadden  
 William & Sally McLaughlin  
 Danial & Madonna McMenamy  
 Cilissa & Reid Mellott  
 Jennifer Menke  
 MaryLou & Christopher Mettler  
 Steven & Lynne Metz  
 Jenny & Matthew Miles  
 Stanley Miller  
 Carol Miller  
 Richard Miller  
 Craig Miller  
 Jean & Douglas Millikan  
 Christina Mitchell  
 Allison & Kenton Moore  
 Tonya Moore  
 Abbigail Mortier  
 Matthew Mullins  
 Donna & Rex Myers  
 Prakash & Ujvala Nadkarni  
 Laura Nayee  
 Steffany & Daniel Neie  
 Alice Nelson  
 Jerald Neumayr  
 Kenneth & Karen Newton  
 David Nichols  
 Bernard Nunning  
 William Nussbaum  
 Kathleen & Michael O'Connor  
 Kerri Okamura  
 Douglas & Margit Olson  
 Gary O'Neal  
 Erin O'Neill  
 Vickie & Brian Opel  
 Timothy & Patricia O'Rourke  
 Conny & Patricia Ottinger  
 Steven & Carol Overstreet  
 Hellen Owuor  
 Douglas Padgett  
 Marcia Palmer  
 Stephen Paloni  
 Paul & Carol Pankros  
 Lisa & Ral Papesh  
 Beth & Steven Park  
 John Parker  
 Carol Pasquale  
 Curtis & Jody Passafume  
 Philip Paugh  
 Rhonda & Robert Christopher Peck  
 Garnet Peck  
 Arnold & Nancy Pedersen  
 Ronald Peeples  
 Gordon Peters

Brian & Stacy Peters  
 Donald Peterson  
 Pamela & Timothy Peterson  
 Mary & Mark Peterson  
 Catherine Pieper  
 Nicole Pitello  
 Robert Plant  
 Richard Plothow  
 Jason Pribble  
 Lea Price  
 Janet & John Provencal  
 Robert & Tamara Pulver  
 Rhonda Putman  
 Lauren Pyszka  
 William & Catherine Quinton  
 Terry Reininga  
 Sara Renaker  
 Frederick Restaino  
 Julia Reyburn  
 Robert Reyes  
 Christie & Bradley Reynolds  
 Francis Rhea  
 Lori Rhorer  
 Julie Rice  
 Warren Richards  
 Joseph & Kimberly Rogers-Rinella  
 David & Linda Ritchie  
 Kent Robinson  
 Toby & Debra Rodney  
 Christie Rogers  
 Debra & Kirk Ross  
 Barbara & David Rumsey  
 Michael Russo  
 Harold Ryan  
 Stewart & Susan Ryckman  
 John Rye  
 Sarah Saft  
 Robert Sanders  
 Daniel & Patricia Sanders  
 Richard & Michele Santay  
 Robert Saunders  
 Mary & James Schafer  
 Kenneth & Patricia Schafermeyer  
 Mary Schafhauser  
 Mary & Arthur Schassberger  
 Susan Schebler  
 James & Elaine Scheele  
 Michael Scheffler  
 David Schlatter  
 Robert Schlembach  
 Gordon & Suzanne Schmitz  
 Barbara & John Schnarr  
 Patrick & Maria Schneider  
 Benjamin Schortgen  
 Janet Schuette  
 Larry & Kathy Schuh  
 Lori & Edwin Schultz  
 Brian Schumer  
 Donna Schwartz  
 Susan & Bradford Scott  
 Mekre Senbetta  
 James & Sandra Senetar  
 James Shachno  
 Chun-Yi Shang  
 Barbara Shaw  
 Dana & Paul Shoemaker  
 Jacqueline Siebenthal  
 Lisa Siefert  
 Barry Siegel  
 Tom & Janet Silver  
 Kelly Sims  
 Lane Sims  
 Kenneth & Teresa Sites  
 Christine Skeoch  
 Mark Skibowski  
 Jennifer & Alan Slade  
 Nicholas & Jill Sloffer

Daniel Smith  
 Michael Smith  
 Virginia & Koven Smith  
 Ruth & John Smith  
 Karen & Thomas Smolenski  
 Edward & Diane Smosna  
 Suellyn & Robert Sorensen  
 Kevin & Elizabeth Sowinski  
 James & Bette Spahr  
 Gale Spears  
 Marilyn & Stuart Speedie  
 Marcia & Phillip Speer  
 William Stahoviak  
 Thomas Starke  
 Bennetta & Robert Stearnes  
 John Stenger  
 Ned Stephenson  
 Debra Steuer  
 Debra & Scott Stiffler  
 Gloria & Ronald Stone  
 Ricky & Penny Stradtner  
 Kenneth & Ruth Stremming  
 Kathy & John Stutsman  
 Alexandra Sugiki  
 Sandra Sutcliffe  
 Sharon & Gene Swackhamer  
 Julie Swarts  
 Catrina Szende  
 Stephanie Taylor  
 Charlotte & Jerome Thomas  
 John & Trena Thornburg  
 Keith Thorpe  
 Feifei Tian & Xiaoming Chen  
 Zvezdana Tica  
 Victoria & Ronald Timmons  
 Ronald Tobias  
 Mark & Donna Tow  
 Katrina & Trent Towne  
 Lawrence Trachtman  
 Timothy Tracy  
 Mark Triboletti  
 Becky Triplett  
 Ross & Stephany Tucker  
 Lawrence Updyke  
 Kelly & James Upson  
 Michael & Patricia Vanderveer  
 Sharon & David Vannice  
 Divya Varkey  
 Christopher & Susan Vice  
 Lisa Vieke  
 Erin Voss  
 Edward & Joetta Wahl  
 Jerry Waldron  
 Edward & Cristie Walker  
 Faith Washington  
 James Weaver  
 Mary Weber  
 Kristin Weidenbenner  
 Kurt & Kathleen Weiss  
 Kelley & Evans Wells  
 Franklin Weyl  
 Robert & Joyce Whelan  
 Sandra & Donald Whitaker  
 Bradley White  
 Kathryn & Bruce White  
 Max & Gertrud White  
 Molly & Timothy White  
 Jami White  
 Ellen Whitlock  
 Jon Whitmore  
 Joseph Wichlinski  
 Thomas & Samantha Wild  
 Donald & Rita Williams  
 Julie Wilsbacher & Andrew Abney  
 Robert & Sharon Wilson  
 James & Virginia Wilson  
 Susan & Walter Wimmer

Carol & David Winstanley  
 Brian & Kelly Wolfe  
 Gary Wright  
 James Wu  
 Cheng Yang & Hongbing Zhang  
 Ann & William Yates  
 William Yates  
 Gary & Rachel Yingling  
 Eugene & Beverly Yoder  
 Marilyn & Jerry Young  
 Denise Young  
 Nancy Yunker  
 Louis Zatorski  
 Terre & Jeffrey Ziegler

**Donors (up to \$99)**

Karen Abbott  
 Julie & Eric Adams  
 Jane Adelman  
 James Adkins  
 William Allen  
 Mina Alsaraf  
 Edward Anderson  
 Sheree Anderson Ghere  
 George Andoh  
 Michael Ankenbruck  
 John & Suzanne Arland  
 Andrew Ault  
 Esther & Gregory Avdakov  
 Robert Babbs  
 Joseph Bailey  
 Patricia Baker  
 Robin & Scott Baker  
 Marthene Baldauf  
 Kimberly & Jeffrey Baldwin  
 Melissa Ball  
 Suzanne Ballengee  
 Jerry Banks  
 Max Barnhart  
 Sandra & Clifford Barrett  
 David Barrett  
 Thomas Bartkowiak  
 Edward Battjes  
 Karen & Dennis Bays  
 Lori Beard  
 Mark Beeman  
 Suzanne Benjamin  
 Jerry Bennett  
 Robert & Mary Bennett  
 Donna Berg  
 Bernard Berk  
 Amy Bettie  
 Phyllis Bishop  
 Jill Biss  
 Stephanie Blackington  
 Benjamin & Jennifer Blomeke  
 Amy Boblitt  
 Gordon & Elizabeth Bokhart  
 Amy Boldt  
 Rita Bombassaro  
 Debra Bonanno  
 Pamela & Rex Bond  
 Diane Bonk  
 Charles Booth  
 James Borgetti  
 Sasha Bradle  
 Timothy Brian  
 Denise Bridges  
 Harriet Bronnenberg  
 Cheryl & Jeffrey Brown  
 Willard Brown  
 James Brown  
 Allegra & Robert Bruce  
 Laura Bryant  
 Joseph & Frances Bubalo  
 Carol & Shane Buckles  
 Dale & Patricia Bultemeier

## Individual Donors

Marcia Burbage  
 Cale Burdick  
 Kimberli & John Burgner  
 Grace Burkey  
 James Butt  
 Thomas & Katherine Butt  
 Joni & Stephen Buyer  
 Mary Byers  
 Michael Calusis  
 James Campbell  
 Noll Campbell  
 Linda & Robert Canup  
 Danielle Carpenter  
 Mary Carpenter  
 Martha Carter-Bhatti  
 James Casey  
 Angela & Brian Cates  
 John Chaber  
 Julie & Jon Chapman  
 Angela Cheng  
 Lauren Cherrier  
 Marvin Chertkoff  
 Robert & Darla Christie  
 Eun Kyoung Chung  
 Cari Clark  
 Dolores Clemmons  
 Mary Cole  
 Ann Colgan  
 Rachel Collier  
 Charles & Lesa Conroy  
 Marigel & Daniel Constantiner  
 Ann Cooper  
 Shannon Copeland  
 Lindsey Corbets  
 Deborah Corley  
 Christine Counterman  
 Marshall & Patricia Cox  
 Tom & Nancy Cox  
 Alan Coy  
 Sherwood Craig  
 Michael & Claudia Crane  
 Kimberli & Stephen Crawford  
 Thomas Cripliver  
 William Crisp  
 David Cruse  
 James & Krista Culley  
 Karie Cummins  
 Anthony & Aimee Currie  
 Margaret & Thomas Dannenfels  
 Rachel Davie  
 David & Mary Davis  
 Phillip Davis  
 Caryn Davis  
 David & Joyce Decker  
 Terry & John Decker  
 Richmond Delacruz  
 Peter & Ashley DeLaney  
 Kitty Deng  
 Allison Di Fiore  
 Irma Diaz-Saavedra  
 Willis Dickens  
 Nathan Dickison  
 Michelle & Todd Dies  
 Richard DiMaria  
 John Dingerdissen  
 Karen Dobbins  
 Carol & Samuel Dominianni  
 Jennifer Dotson  
 Angela & Bobby Douglas  
 Carmen Drambarean  
 Alan Drexler  
 Anthony Drum  
 Wendy Dulin  
 Kenneth & Mary Dunbar  
 Elaine & Gerald Duncan  
 Gary Dunn  
 Richard Durham

Samuel Durham  
 Donald & Linda Durkee  
 Joe Dyer  
 Ruth Earle  
 David & Patricia Ebbeler  
 Bradley & Tiffani Eisenhauer  
 Timothy Ellerman  
 Ashton Ellerman  
 Victor Elsasser  
 Patricia & Mark Elsner  
 Jenny Emery  
 Sarah Everhardus  
 Saundra Eversole  
 Kelly Eveslage  
 Kent & RaMona Evoy  
 Richard Faga  
 Thomas Faulkner  
 Barbara Fellows  
 Sandra & Frank Fetzer  
 Dennis & Rita Fields  
 Tracy Fischer  
 Dale Fonner  
 Annette Fontaine & Dana Hoggatt  
 Mario Forcione  
 Lasonya Ford  
 Raymond & Susan Fortman  
 Elaine Fortner  
 Kristy & James Fortune  
 George & Charlene Foster  
 Jennifer Frederick  
 Ann French  
 Simon Frey  
 Andrew Fritschle  
 Sherri & Todd Frye  
 Jerry Fuhrmann  
 Margene Fuller  
 Charles Furnish  
 Jill Gagne  
 Caroline Gaither  
 Patrick & Beth Gallagher  
 Melvin & Dene Garbow  
 Mary & John Garcia  
 Anne & James Garrett  
 Susan Geddes  
 Robert Geier  
 Allen & Rose Gerard  
 Robert & Dorothy Gerard  
 Laura Geswein  
 Martin & Michelle Giannamore  
 Sara & Eric Gladish  
 Rebecca Golden  
 William Golod  
 John Gomes  
 Elmer Gomes  
 Jocelyn & John Good  
 Charles & Patricia Gorbey  
 Daniel & Pamela Gorgol  
 Jane & Carl Gottlieb  
 Barry & Paula Graden  
 Laura & Thomas Grana  
 John Grangeia  
 Tara & Derek Green  
 Gregory Green  
 Elaine & Jerrold Greene  
 Philip Gressel  
 Mary Ellen & John Grubbs  
 Margaret & Robert Gurley  
 Cheryl Guzikowski  
 Nathan & Beth Gwinnup  
 Thomas Hague  
 David Hahn  
 Vicki Hall  
 Christine Hall  
 Nancy Hall  
 Bryan Hall  
 Michael Hamang  
 Jennifer Hambly

Stephanie Hammonds  
 Julie Hanus  
 Robert Hartsock  
 Harold Harville  
 Esther Hawkins  
 Linda Heckler  
 Ellen Hendershot  
 Tiffani & Phillip Henry  
 Joshua & Shana McCool-Henry  
 Jay Henschen  
 Katrina Herman  
 Jessica Hermes  
 Zsolt Hertelendy  
 Anne & Paul Hession  
 Angela Hobson  
 Dennis Hoch  
 Jamie & Matthew Hoffman  
 Susan & John Hohenberger  
 Martina Holder  
 Thomas & Valerie Hood  
 Carol Howard  
 James & Susan Huber  
 Scott & Lori Hufford  
 Nichole & Dale Human  
 Karl Humma  
 Mary Hutchens  
 Jeffrey Hutchens  
 Douglas & Jacqueline Iser-Curts  
 Ann Ittenbach  
 Randy Ivanov  
 Matthew Jackson  
 Ashley Jacobs  
 Renee Jarrett  
 Heather Jaynes  
 Paul Jeffries  
 Christopher & Tara Jellison  
 Tricia & Bradley Jennewein  
 Bradley & Joi Jimison  
 Lulu Jin  
 Ronald & Patricia Johnson  
 Amanda & Nicholas Johnson  
 Suzanne & Mark Johnson  
 Chad & Janice Johnson  
 Timothy & Stefani Johnston  
 Jeffrey Jones  
 Emily Jones  
 Don Julian  
 Diana & John Jurss  
 Mary & Rock Kaiser  
 William & Sharon Kammeyer  
 John & Doris Kane  
 Alice & Joseph Karp  
 Linda & Andrew Kasianchuk  
 Linet Kattookaran  
 Michael & Kellie Kays  
 Leonard & Kimberly Keen  
 Tina Keller  
 Ronald Keller  
 Maurice Keltsch  
 Lindsey & Brian Kemper  
 David Kempf  
 Kimberly Kendall  
 Brownell Kennedy-Hutson  
 Jennifer Keresztes  
 Norman & Mary Lou Kesling  
 Lisa & Robert Kesling  
 Scott & Ellen Keyes  
 Suzanne & John Kibbler  
 Kimberly Kieper  
 Chinpai Kim  
 Michael Kinard  
 Brian King  
 Daniel & Barbara Kirk  
 Judith Kistler  
 Bonnie Klank  
 Thomas Kleyn  
 Scott & Jennifer Knishka

Martha Knop  
 Carolyn & Francis Kochert  
 Frank & Carol Kodiak  
 Julie Koehler & Robert Bowman  
 Diane Koomler  
 Anna Kovalenko  
 Geraldine Kovel  
 Leonard Kraisel  
 Otto Kreuzer  
 Mallory Kruckman  
 Dennis & Elaine Kuespert  
 Kenneth Kuhns  
 Sandra & David Kull  
 Donald Kussmaul  
 Nita & Christopher La Follette  
 Karen & John Lackey  
 Michael Ladewski  
 Elizabeth & Ben Lambeck  
 Charlea Lammey  
 Jennifer & Kevin Lampus  
 Claire Landis  
 Pamela & Dale Langferman  
 Donnis Lantz  
 Tanicium Lapsley  
 Daniel & Linda Layman  
 Geoffrey & Beth Lee  
 Xen Lemmon  
 Jeffrey & Mary Lewis  
 Xuhong Li & Hong Wen  
 Wen-Nuei Lin  
 Xiaoping Lin & Fushan Zhang  
 Roxanne Ling  
 Gloria Liou  
 Robert Litznerski  
 Mei Liu  
 Yvette & Rozell Lloyd  
 David Lloyd & Christine Settineri  
 Ashley Logan  
 Mary Jane Lohroff  
 Chester & Susan Long  
 Amy & Blake Luebbehusen  
 Thalia Maginas  
 Matthew & Stephanie Mahler  
 Jenny Mahoney  
 Walter Maikranz  
 Geraldine Maniraguha  
 Lorie & Gregory Marquez  
 Christopher Martin  
 Rebecca & Ryan Martin  
 Jennifer Martz  
 David Mason  
 Molly Mason  
 John Massa  
 Nichole Massaro  
 Farrah Mathas  
 Anthony Mc Evoy  
 Jill Mc Quern  
 Joshua McAfee  
 Noel McClintock  
 Steven & Margaret McDonald  
 Geoffrey Glauser & Karen McKenna  
 Robert & Valerie McManus  
 Wesley McMillian & Christine Jones  
 Stephen McNeil  
 James Meister  
 Robert & Janet Mercker  
 Sally & Roger Meridith  
 Kimberly Merkel  
 Philip & Alta Merker  
 Gale & Janet Merrick  
 Mary Messer  
 Debra Meyer  
 Karin & Jimmy Meyer  
 Jeanette & David Meyer  
 Melinda Michyeta  
 Margaret Mihalko  
 Christopher & Crystal Miller



Jason Miller  
 John & Lora Miller  
 James & Karen Miller  
 Joan & Roy Miller  
 Rebecca Miller  
 Richard Milroy  
 Jerome & Lisa Mincy  
 Marsha & Randall Mitchell  
 Megan Mitzner  
 Richard Molchan  
 Leanne & Philip Monroe  
 Sarah Moran  
 Angela & Phillip Morgan  
 Donna Morgan  
 Dianne & David Morrison  
 Holly & John Moser  
 Jennifer Mullen  
 Michael & Ellen Mullins  
 Danielle & Kyle Mullins  
 Joni Murray-Petersen  
 Brian & Jorja Musial  
 Debra & Kevin Nahas  
 Daniel & Megan Nail  
 Bhavik Nana  
 Kathryn & Roy Neal  
 Theresa & Richard Neumann  
 Jill Neumann  
 Garrett New  
 Chaneta Newbern  
 Robert Newman  
 Robert & Marilyn Newton  
 Duy Nguyen & Van Luu  
 Dee & John Nicholson  
 Christopher Nosek  
 Terry & Sally O'Connell  
 Grace O'Connor  
 Jeanette Olenick  
 Laura & Kevin Oliver  
 Cynthia & Brian Ortman  
 Mary Oudin  
 Brian Overholser  
 Faye & George Owens  
 Brinda Pandya  
 Nancy & Michael Pappas  
 Cheryl Park  
 Gar Park  
 Russell & Louise Parke  
 Scott Parks  
 Donna Patch  
 Sejal Patel  
 Nalin Payakachat  
 Nancy Pena-Hac  
 Carol Peo  
 Jeffrey Perdiew  
 Jan Peterson  
 Jeanne Peterson  
 Jasmin Pettigrew  
 Neena Phadke  
 Lori & Douglas Phillips  
 Carol Pisowicz  
 Donna & Steven Pitts  
 Astra Plucis  
 Michael & Ann Porter  
 Jennifer Post  
 Sarah Powell  
 Kenneth Prue  
 Donna & Michael Pruzin  
 Bart & Marcella Psaila  
 Anthony Putschaven  
 Jie Ying Qiu  
 Tiffany & Paul Quellette  
 Frederick & Eleanore Radzialowski  
 Eldon Rager  
 Erin Rainey  
 Joshua Ramer  
 Joy & Brian Read  
 Gerald Redar

James Reed  
 Don Rees  
 Jill & Michael Regan  
 Michael & Deborah Reinking  
 Martin & Diane Reitz  
 Rebecca & William Rettig  
 Susanne Rhoades  
 Steven & Michele Ridge  
 Thomas & Mary Riecke  
 Michelle & James Riggs  
 Krista Ringwald  
 Carol & James Risk  
 Diana Risselmann  
 Karen & Pedro Rivera  
 Daryl Robertson  
 Dennis Rockhill  
 Michael Rodriguez  
 LuAnn Roesch  
 Monica & Jeffrey Rollins  
 Willis & Betty Roose  
 Judith & Phillip Rosenkrantz  
 Lynn Rostron  
 Rachelle & Gregory Roush  
 Deborah Rubin  
 Kelly & Matthew Ruby  
 Clare Rupprecht  
 Dennis & Katherine Ruprecht  
 Ivan & Elaine Sanzel  
 Robert & Sherry Sausaman  
 John Scanlin  
 Paul Schirz  
 Andrew Schmelz  
 Michael Schneider  
 Julianne & Daniel Schnur  
 Jerry & Karen Schoenefeld  
 Martha Schrader  
 Frederick Schwartz  
 Thomas Schwartz  
 James & Pamela Schweitzer  
 April Scott  
 Dianna Sellers  
 Angela Sexson  
 Charmaine Shafer  
 Fredric & Marcia Shaffer  
 Megha Shah  
 Yi-Hsin & Ming Shang  
 Kathleen Shank  
 Andrew Shaw  
 Debbie Shaw  
 Jack Shelton  
 Helen Sherman  
 Helen & Frederick Shewman  
 Marantha Short  
 Lisa & Douglas Shull  
 Deborah & Matthew Simcox  
 Jacob Simpson  
 Jane & Kenneth Sipe  
 Darl Skillen  
 Raymond & Annette Smith  
 Terri Smith  
 Karen Smith  
 Melissa Smith  
 Karen Smollen  
 Don Smucker  
 James & Barbara Snell  
 Steven & Mary Snell  
 Scott Snyder  
 Elaine Sorg  
 Stephen & Jill Soseneheimer  
 Sandra Souza  
 Holly Sparks  
 Catherine & George Sperka  
 Mark Speth  
 Deborah Spicer  
 Susan & Keith Spychala  
 Susan & Gil Squiller  
 Diane Stanojic

Christina & Lawrence Stayback  
 William Stedman  
 Joan Stefaniak  
 Heather & Scott Steinbrink  
 Melissa Stephans  
 James & Joan Stiver  
 Joseph & Joyce Stodola  
 Edwin Sugita  
 Yiping Sun & Wen Qin  
 Apinya Suppatkul  
 Michele Swihart  
 Alexander Szewciw  
 Nadia & James Tancredi  
 Ernest Tawiah-Hacka  
 William Taylor  
 Pamela Terrell  
 Susan & Michael Terry  
 Leulseged Tesfaye  
 Ernest Thompson  
 Julia Thompson  
 Gina & Randy Thompson  
 Elena Thompson  
 Jill Thompson  
 Michelle & Eric Thompson  
 Leesa & Dennis Thompson  
 Candice Thorpe  
 Dayna Timmer  
 Chelsea Tisdale  
 James Titus  
 Lawrence & Alice Tolle  
 Sally & David Turner  
 Cynthia & Thomas Uhrig  
 Amanda Valensi  
 Suzanne & Ronald Valle  
 Jacqueline VanderVelden  
 John VandeWiele  
 Rebecca Vermeulen  
 Brian & Maureen VerVaet  
 Kristin Villa  
 Carol & Timothy Voegelé  
 Susan Vorndran

Lisa & Eric Waddell  
 Jodee Wade  
 Jayne & Daniel Waechter  
 Karen & Michael Wall  
 Fred & Margaret Wall  
 Ashley Warburton  
 Ronald Wasikowski  
 Richard Waxman  
 William & Karen Way  
 Cheryl Weatherholt  
 Hannah Weber  
 Margaret & Michael Webster  
 Patricia & Robert Wegner  
 Joseph Weil  
 Albert Wertheimer  
 Paul Westerman  
 Kellie White  
 Larry Whitlow  
 Gary Whitson  
 Brittany Williams  
 Barbara Wilson  
 Bradford Wirth  
 Amy Wleklinski  
 Kathryn Wolpert  
 Teresa Woolard  
 Elizabeth Woolsey  
 Roxanne Yankee  
 Harriett & George Yarbrough  
 Kyung Yi  
 Terry Young  
 James Young  
 Carla Young-Vinson  
 Jamie Younts  
 Dae-Jin Yun  
 Arnold & Carol Zegart  
 Beth Zehr  
 Luo Jia Zheng  
 Ethel Ziemer  
 Theresa & Rex Zink  
 Leanne Zins  
 Thomas Zioncheck



## Corporations, Foundations, and Other Organizations

### \$100,000 and Above

Boston Scientific  
Chronic Liver Disease Communications  
Eli Lilly and Company  
Pharmacy Quality Alliance  
PhRMA Foundation

### \$10,000 to \$99,999

Abbott Laboratories  
American Association of Colleges of Pharmacy  
American Association of Pharmaceutical Scientists  
American College of Clinical Pharmacy  
American Foundation for Pharmaceutical Education  
American Parkinson Disease Association  
Bristol-Myers Squibb  
C. R. Bard Foundation  
Cardinal Health, Inc.  
Clinton Foundation HIV/AIDS Initiative  
CVS/Caremark Corporation  
Cystic Fibrosis Foundation  
Daiichi Sankyo Company Ltd  
General Chemical LLC  
Hoffmann-La Roche Ltd  
Hook Drug Foundation, Inc.  
J D & Associates Enterprises, Inc.  
Johnson & Johnson  
Kroger Company  
Michael J. Fox Foundation  
National Alliance for Research on Schizophrenia and Depression  
Parkinson's Disease Foundation  
Pfizer, Inc.  
Regenstrief Institute for Health Care  
Showalter Trust  
Supervalu Incorporated  
T. Rowe Price Program for Charitable Giving  
Walgreen Company  
Wishard Memorial Foundation

### \$1,000 to \$9,999

Advanced Pharmacy Concepts  
Arcadia Resources, Inc.  
Ayco Charitable Foundation  
Boehringer Ingelheim USA Corporation  
Brogan Pharmaceuticals LLC  
Community Foundation of Greater Fort Wayne  
DSN Pharma Services LLC  
ExxonMobil Foundation  
Fairmeadows Home Health Center, Inc.  
Fidelity Charitable Gift Fund  
Fred Run Ltd.  
Hospira, Inc.  
Hudson Drug & Hallmark Shop  
Hydrox Laboratories  
IMO Consulting  
In Touch Pharmaceuticals  
Johnson Controls Foundation  
L.E.W. RX Consultants, Inc.  
Marsh Supermarkets, Inc.  
McAllister Foundation  
Merck & Company Incorporated  
National Association of Chain Drug Stores  
Northeast Indiana Pharmacists Association, Inc.  
Novartis AG  
Paul Kehrler Family Foundation  
Pharmacists Mutual Companies  
Rho Chi  
Salem Apothecary, Inc.  
Schwab Fund for Charitable Giving  
Southwestern Indiana Pharmaceutical Association  
St. Joseph County Pharmacy Association  
Wal-Mart Stores, Inc.  
Walther Cancer Foundation, Inc.

### Up to \$999

3M Foundation, Inc.  
Alcoa Foundation  
American Electric Power Service Corporation  
Amgen Foundation  
AstraZeneca  
AT&T Foundation  
Baxter International Foundation  
Caterpillar Foundation  
Covidien Ltd.  
Davencorp Management Company  
Dow Chemical Foundation  
DRG Enterprises  
Exelon  
Express Scripts Foundation  
Fagen Pharmacies  
Gavilon LLC  
General Electric Foundation  
GlaxoSmithKline Foundation  
IDDC Corporation  
Johnson's Village Pharmacy, Inc.  
Kappa Epsilon  
Kimberly-Clark Foundation  
Kodo Pharmacy  
Kraft Foods, Inc.  
Lange Advisors, Inc.  
Leight M. Wilson Foundation, Inc.  
Newman & Ullman, Inc.  
Prairieland Vending, Inc.  
Principal Financial Group, Inc.  
Procter & Gamble  
Raytheon Company  
RJA Consultants LLC  
Sanofi-Aventis  
Schneider Electric/Square D Foundation  
Shell Oil Company Foundation  
State Farm Companies Foundation  
Takeda Pharmaceuticals North America, Inc.  
The Medicine Chest Pharmacy  
Tippecanoe County Pharmaceutical Association  
United Farm Family Mutual Insurance  
United Technologies

## Honorarium & Memorial Gifts

### In Memory of Stanley Beck

Charles & Madonna Flemming

### In Memory of H. I. Byrn

Dorothy Byrn

### In Memory of Zella Cwalina

James & Marilyn Dammon  
Virginia Tyler  
Teresa Woolard  
Joan Stefaniak

### In Honor of Miles W. Davis

Miles Davis  
Seth Davis

### In Memory of Gloria Francke

Ann Zehner Angle

### In Honor of Maria D.

#### Bowman-Horner

Carolyn & Gregory Cagnassola  
Debra Kay & Steven Ewing  
Constance Mattingly  
Debra & Kevin Nahas  
Mary Kay & John Garcia  
Carol & James Risk  
Carol & Timothy Voegele  
Gary & Janet Fourman  
Susan & Michael Terry  
Linda Boothe  
Angela Sexson  
John VandeWiele  
Kathryn Eaton  
Susan Schebler  
Terry Young  
Lyman & Libby Busard  
Gottlieb Glauninger  
Kathryn Armstrong

Chaneta Newbern

Michael Russo  
Stephanie Blackington  
Mark Beeman

### In Memory of Troy Lamar Kerley

Charles & Madonna Flemming

### In Honor of Herbert Lieberman

Bruce Lieberman

### In Honor of Mary Losey

Virginia Shen

### In Memory of Col. (Ret.)

**Jack P. Money**  
Robert Babbs

### In Honor of Alice Nelson

Virginia Shen

### In Honor of Beatrice Railing

Kelly McNulty Railing

### In Memory of Robert Railing

Beatrice Railing  
Robert & Joyce Whelan

### In Memory of Ellen Reeder

Susan & Bradford Scott

### In Memory of Michael E. Smith

Gordon Peters  
Newman & Ullman, Inc.  
James Brown  
Prairieland Vending, Inc.  
Richard Molchan  
Robert Hartsock  
Don Rees

## R. B. Stewart Society

The R. B. Stewart Society recognizes benefactors who make commitments to the future of Purdue University by way of deferred giving. The following are Pharmacy alumni and friends who have remembered the College of Pharmacy in their estate plans.

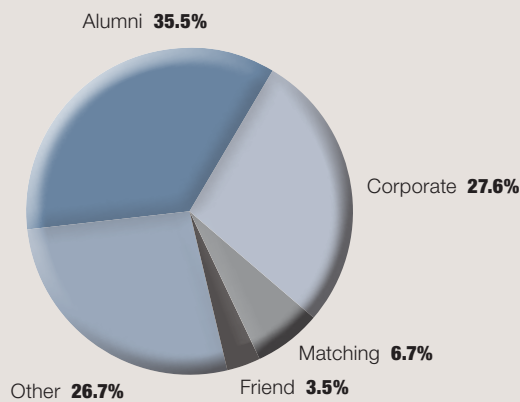


Max and Mergie Adams  
 Albert Alderman\*  
 John Anderson  
 Ann Zehner Angle  
 Dorothy\* and Samuel Arnett  
 Keith Ashby  
 Eugene Bibbins\*  
 William and Mary Ann Bindley  
 Charles and Esther Boonstra  
 Richard and Anne Borch  
 Edith Brayer\*  
 Donald\* and Frances\* Brodie  
 Scott and Sandra Brower  
 Irene Brown\*  
 Otis Brown\*  
 Robert and Sondra Brown  
 Edith Bucke\*  
 Helen Carney\*  
 JeanAnne and James Chaney  
 Norman Christen\*  
 Allen\* and Hester\* Collins  
 Carolyn Collins\*  
 Gloria and Jeffrey Copeland  
 Quanah Crowder\*

Rusty and Stephanie Cromer  
 Eugene Crum\*  
 Lester Davis  
 Frances\* and Laverne\* DeMong  
 Carl Driever  
 Randall and Connie Erb  
 Joyce Findley\*  
 David\* and Elizabeth\* Fonda  
 Maria Floss\*  
 Gloria Francke\*  
 Elizabeth and Leslie Graham  
 June and Reigh Gunderson  
 Drewry Haskins\*  
 Brian and Elaine Holstine  
 James Hopkins\*  
 Albert Kienly\*  
 Suzanne Kiely  
 Frank Kolb\*  
 Ernest Korosi\*  
 Edward Lady\*  
 Mary\* and Jerome Lampert  
 Robert and Brenda Larew  
 Mary Lauderdale\*  
 Richard Leukhart\*

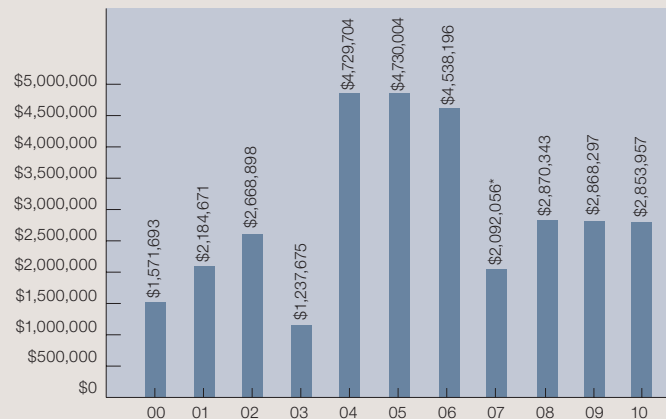
Laura Lohman  
 Mary Losey  
 Emil Martini Jr.\*  
 Michael and Cheryl McMains  
 Jack Money\*  
 Rosemary\* and Robert Netherton  
 William\* and Patsyjane\* O'Malley  
 Eva\* and James\* Potter  
 James Pritchard  
 Marvin and Melanie Richardson  
 Charles\* and Mary Schreiber  
 Janet Strang\*  
 Blaine and Shirley Sutton  
 Mark and Ann Varnau  
 Frederick Waugh\*  
 Andrea Willman  
 Robert and Kathleen Wittgen  
 Walter Wright  
 \* Indicates Deceased

## Fiscal 2010 Giving to the College of Pharmacy



## College of Pharmacy Cash Gifts During the Last Decade

\* Excludes \$25,000,000 Lilly Endowment Grant



# Meet Our Kenyan Colleague: *Mercy Nabwire*



Dr. Mercy Nabwire is a clinical pharmacist at Moi Teaching and Referral Hospital and a Department of Pharmacy Practice Adjunct Clinical Faculty. Her responsibilities include practice and research in the diabetes care program and anticoagulation clinics, clinical rounds on the hospital wards, pharmaceutical care at Riley Mother Baby Hospital, and precepting Purdue and University of Nairobi pharmacy students and interns.

## In Her Own Words... *My Visit to the States*

This was my first time out of Kenya. I did not know what to expect, but I was sure it was going to be a totally new experience. My first stop was Orlando, Florida, where I had the opportunity to attend and present a poster about our diabetes program at the American Diabetes Association Annual International Conference. Our poster was selected for presentation at the prestigious President's Poster Session, and I was glad I had the opportunity to present. I was surprised to learn that I was the only one from Africa attending the conference. I learned a lot from the presentations and I still apply the knowledge gained in my daily practice.

From Orlando, I went to Indianapolis where I spent five weeks. While there, I had the opportunity to shadow three clinical pharmacists at Wishard Hospital. What impressed me the most was the good organization of patient information. Retrieval of data was quite easy, unlike what we see in Kenya. Having seen the benefits of an organized information system, I have been trying to reinforce this in my practice where we are implementing an electronic database. I was glad to realize that despite our limited resources, we still provide quality patient care in our diabetes and anticoagulation clinics.

I also spent an afternoon with clinical pharmacy preceptors and PharmD candidates from Purdue and Butler Universities. The afternoon patient and topic discussions were quite similar to what we do in Kenya; the only difference is the preceptors had fewer students.

I had the opportunity to visit Purdue on two occasions. Dr. Ellen Schellhase, Clinical Assistant Professor of Pharmacy Practice, was an excellent tour guide, and I was impressed by the buildings and the size of the campus. I met with faculty members and had the opportunity to talk about our program in Kenya.

This trip provided a great chance for me to interact with new people and have a different cultural experience. I learned that people who live on opposite sides of the globe, but share similar values and aspirations, can build long-lasting friendships that will continue to teach and nurture us.



*L to R: Imran Manji, Mercy Nabwire and Beatrice Jakait*

## ASHP Best Practices Award

*Purdue University College of Pharmacy, in collaboration with USAID-AMPATH, Moi Teaching and Referral Hospital, and Moi University School of Medicine, has received a 2010 ASHP Best Practices in Health-Systems Award for the "Implementation of Pharmacy Practice in a Rural Resource-Constrained Setting in Kenya."*

*This award was presented at the ASHP Midyear Clinical Meeting. The award was announced during the Opening General Session and a reception was held during the meeting. Congratulations to Drs. Sonak Pastakia, Ellen Schellhase, Beatrice Jakait, Mercy Nabwire, Imran Manji, and Monica Miller and all of the pharmacy students who have collaborated on this program.*





# SIXTY SECONDS

*With a Graduate Student*

## Wyatt J. Roth

**B.S. in Pharmaceutical Sciences,**  
2008, Purdue University  
**B.S. in Agricultural and Biological**  
**Engineering, 2008, Purdue University**  
**Doctoral Student, Department of**  
**Industrial and Physical Pharmacy**

**Anticipated Graduation Date:**  
May 2012

**Hometown:** Winamac, Indiana

**Major Professor:**  
Dr. Gregory T. Knipp

**Thesis Title:** Assessing the Viability of  
*In Vitro* and *In Vivo* Oral Bioavailability  
Screening Techniques

**Research Interests:** Studying how dos-  
age form design and excipients affect  
*in vivo* and *in vitro* drug performance

**Post-graduation plans:** Work in industry  
in a formulation or group

**“My most memorable  
experience of graduate  
school has been traveling  
to Moshi, Tanzania, with  
Dr. Steve Byrn to help teach  
in the Sustainable Medicines  
for Africa Program. The people  
and students were extremely  
friendly, hospitable, and eager  
to learn. It was a life changing  
experience to see a part  
of the world first-hand that  
most will only read about  
or see on TV.”**

### Pharm.D. Graduates

	Number	Percent
Students Surveyed	154	100.00%
Responses	154	100.00%
Committed Responses	150	97.40%
Employed	112	74.67%
Continuing Education**	38	25.33%
Undecided/Seeking	3/1	2.60%
<b>Pharm.D. Employment Offers</b>	<i>Average</i> 1.92	<i>Range</i> 1 - 8
<b>Commitment Location</b>	<i>Indiana</i> 88	<i>Other</i> 62

### BSPS Graduates

	Number	Percent
Students Surveyed:	11	100.00%
Responses	11	100.00%
Committed Responses	9	81.82%
Employed (Other)	3	33.33%
Continuing Education	6	66.67%
Seeking	2	18.18%
<b>BSPS Employment Offers</b>	<i>Average</i> 1.33	<i>Range</i> 1 - 2
<b>Commitment Location</b>	<i>Indiana</i> 4	<i>Other</i> 5

## Employment Surveys

# 2010

### Commitment Type

	Number	Percent	Avg. Salary	Salary Range
Residency**	32	21.33%	\$40,186	\$36,000 - 54,080
Fellowship**	2	1.33%	\$45,200	\$53,000 - 41,600
Chain (Retail)	81	54.00%	\$113,825	\$100,000 - 127,400
Independent (Retail)	1	0.67%	*	
Hospital	22	14.66%	\$97,395	\$83,000 - 106,000
Ambulatory Clinic	1	0.67%	*	
Consulting	1	0.67%	*	
Industry	1	0.67%	*	
Nuclear	4	2.66%	\$108,060	\$103,000 - 115,440
Specialty (Home Infusion)	1	0.67%	*	

**Employment Salary Average** \$109,751

\*only one salary reported

\*\* graduate or professional school/fellowship/residency

### Commitment Type

	Number	Percent	Avg. Salary	Salary Range
Industry	3	33.33%	\$58,000	\$56,000 - 61,000

# 2010 College of Pharmacy Awards



(L to R) Eileen Dolan, Dean Craig Svensson, Garnet Peck, Edward Langston, Heidi Anderson, and Gregory Fox

## Pharmacy Distinguished Alumni Awards

Upon the occasion of the School's Centennial in 1984, the Faculty of the College of Pharmacy chose to initiate a Distinguished Pharmacy Alumni Program. The title of Distinguished Pharmacy Alumnus is conferred annually upon selected alumni in recognition of their outstanding achievement in professional and scientific endeavors.

The faculty of the College of Pharmacy selected four alumni to receive the 2010 Distinguished Alumni Awards. The several Distinguished Alumni were honored at an awards event on October 22, 2010 during a luncheon ceremony in the Buchanan Suites at Ross Ade Stadium. Complete biographies of each recipient and additional photos of the event are available at [www.pharmacy.purdue.edu/advancement/honors/distinguished/](http://www.pharmacy.purdue.edu/advancement/honors/distinguished/).



### Heidi M. Anderson

BS, Pharmacy, Purdue University, 1978  
MS, Education, Purdue University, 1982  
PhD, Pharmacy Administration, Purdue University, 1986  
*Associate Provost for Faculty Affairs, University of Kentucky*



### M. Eileen Dolan

BS, Chemistry, cum laude, University of Dayton  
PhD, Medicinal Chemistry, Purdue University, 1983  
*Professor, Department of Medicine, The University of Chicago*



### Edward L. Langston

BS Pharmacy, Purdue University, 1967  
MD, Indiana University School of Medicine, 1975  
*Director, Graduate Medical Education, St. Elizabeth Regional Health*



### Garnet E. Peck

BS, Pharmacy, Ohio Northern University, 1957  
MS, Industrial Pharmacy, Purdue University, 1959  
PhD, Industrial Pharmacy, Purdue University, 1962  
*Professor Emeritus, Department of Industrial and Physical Pharmacy, Purdue University*

## Friend of Pharmacy

The title of Friend of Pharmacy is conferred upon non-alumni friends of the University in recognition of their outstanding achievements in professional and scientific endeavors in the field of pharmacy and pharmaceutical sciences. The faculty of the College of Pharmacy chooses one or more Friends to receive the annual Friend of Pharmacy Award.

The faculty of the College of Pharmacy selected one friend to receive the 2010 Friend of Pharmacy Award. Gregory A. Fox was honored at the awards luncheon ceremony on October 22, 2010. His complete biography is available at [www.pharmacy.purdue.edu/advancement/honors/friends/](http://www.pharmacy.purdue.edu/advancement/honors/friends/).



### Gregory A. Fox

University of Cincinnati, 1983  
*Pharmacy Merchandiser, The Kroger Co.*

# Building a Pharmacy for Haiti

By Daniel Wilson (First Professional Year PharmD Student)

As pharmacists and student pharmacists, it is always encouraging to review the *Oath of a Pharmacist*. Recently, I noticed that the first segment reads, "I will consider the welfare of humanity and relief of suffering my primary concerns." Unfortunately, we still live in a world where, in many places, there is little welfare and much suffering.

This year, the **Purdue Pharmacy Student Christian Association** is undertaking a project to bring relief to Grand Goave, Haiti. Lifeline Christian Mission has been serving there for years, but the current pharmacy in their clinic can no longer meet the needs of the community. In March 2011, Lifeline will begin construction. By summer 2012, members of various organizations will travel to teach Haitians about proper medication use. The new pharmacy will be capable of holding all the needed medications and will have an air conditioning unit to keep the heat and humidity from damaging the medicine. Because of Lifeline's extra reconstruction expenses



Volunteer nurse with Haitian children by their home in Grand Goave

from the earthquake, we are trying to provide this at no cost to them. This is certainly not an easy task to complete, but it is very important. If you would like to help us reach this goal, checks can be made to *Lifeline Christian Mission* at 184 Olde County Line Road, Westerville, OH 43081 with "Pharmacy" in the memo. If you have any questions about the project or Lifeline, I would be happy to answer them. I can be reached at [wilson17@purdue.edu](mailto:wilson17@purdue.edu).



## CARDINAL HEALTH Student Leadership Conference

**"Whether or not leadership is learned or innate is arguable; however, leadership should always be encouraged—especially among students. I never considered myself a leader throughout most of my academic career. I did, however, begin taking on more leadership roles as a pharmacy student and found myself becoming more interested and passionate about developing into a better leader. When I was asked to represent Purdue at the 11th Annual Cardinal Health Student Leadership Conference, I felt extremely honored and grateful."**

– Tiffany Pon,  
2011 PharmD  
Candidate

*Tiffany Pon (left) poses with newfound friend and fellow leadership conference participant, Ushma Kanzaria*



Each May, Cardinal Health invites schools/colleges of pharmacy to participate in their annual conference. This year, over 30 pharmacy student leaders across the nation accepted the invitation and met over a whirlwind weekend in Houston, Texas, to network, collaborate, and grow as leaders. The College of Pharmacy selected Tiffany Pon, currently a fourth professional year PharmD student, to represent Purdue this past spring.

Cardinal Health paid for all expenses, including travel, hotel, and meals. Tremendous thought was put into the program, which included an intensive financial training activity, an etiquette dinner, and leadership/teamwork activities and discussions. Even more impressive, says Tiffany, was that it was clear that the objective of the program was not to recruit new hires. The entire weekend was designed to truly facilitate the students' development and build new relationships.

"As students, we had no choice but to become fast friends and take advantage of the unique experience. After three days, I left Houston 30 friends richer, and these relationships will follow me well into my pharmacy career," comments Tiffany. "I am glad Purdue University participates in this program yearly. It shows that student leadership is important to this institution, and as pharmacy continues to change, the development of pharmacy student leaders is crucial to the progress of this profession."





# The New Purdue Doctor of Pharmacy Curriculum

Students entering the **Doctor of Pharmacy** program in the fall of 2012 will experience a completely redesigned educational program. The faculty of the College have been working on developing the new Pharm.D. curriculum for more than three years and are excited about its several new features. The pre-pharmacy requirements have been redesigned as well, but the curriculum retains the opportunity to complete the pre-pharmacy requirements in two years.



## Driving Forces Behind Curricular Redesign

The practice of pharmacy continues to evolve with an increasing expectation that pharmacists take responsibility to assure that patients obtain optimal outcomes in their drug therapy. The knowledge base that pharmacists must have has changed dramatically as well as the technical skills required to apply that knowledge. Within pharmacy education there is much more emphasis on the utilization of instructional technology, assuring instructional efficiencies and a growing belief that students must take responsibility for their own learning in order to prepare them to be effective practitioners and life-long learners. These practice and education changes are reflected in new accreditation standards that have been implemented by the Accreditation Council for Pharmacy Education (ACPE). These standards include an emphasis on practice skill development early in the curriculum, educational content relevant to the current and evolving practice roles of pharmacists, the assessment of student achievement of curricular outcomes, and an expectation that professionalism and leadership skill development are incorporated throughout the curriculum.

## The Redesign Process

Dean Craig Svensson charged a 13-member task force in January of 2008 to review the content, structure, delivery, and objectives of the Doctor of Pharmacy curriculum and to make recommendations to the faculty for a new curriculum. The task force was co-chaired by Drs. Holly Mason, Senior Associate Dean, and Steve Scott, Chair of the Curriculum Committee. The task force included faculty, staff, student, and alumni representation. In designing the new curriculum, Dean Svensson asked the task force to evaluate emerging trends in pharmacy education and practice and how they should shape the curriculum. From a practical perspective, the task force was asked to plan to offer the curriculum within the context of our current physical facilities and that it should be assumed that no significant change in the numbers of faculty in the College would occur. Most importantly, it was stressed to the task force that no element of our current program should be viewed as essential unless it were justified.

The task force met twice monthly from February 2008 to April 2009. The task force divided itself into seven working groups and invited broad faculty participation to plan various components of the curriculum. Advice was sought from the outside advisory councils of the college, faculty colleagues in other pharmacy schools and colleges, various college standing committees, and student focus groups and organizations. During the planning process the faculty were updated and

feedback was sought at regularly scheduled faculty meetings and two special meetings devoted to comment and discussion about the developing curriculum. This culminated with a unanimous faculty vote for approval of the new curriculum in April 2009. Faculty implementation working groups are now outlining the specific course content for each of the classes in the new curriculum. This process has begun with the development of the P-1 courses during the 2010-2011 academic year followed by development of the P-2 and P-3 courses during the 2011-2012 and 2012-2013 academic years, respectively. The objectives and evaluation processes associated with APPE rotations for the P-4 year are being revised concurrently to take into account the P-1 through P-3 course preparation of students.

## The Two Year Pre-Pharmacy Curriculum

As noted, an important consideration in developing the new professional program was to retain the option for students to complete the pre-pharmacy curriculum in two years. We have been able to accomplish this and still provide foundational course work that will meet the goals of the new Pharm.D. curriculum. Students who started the pre-pharmacy curriculum on the West Lafayette campus in the fall of 2010 completed a single five-credit general chemistry course in their first semester instead of the two-semester sequence that has traditionally been taken by first-year pre-pharmacy students. This allows students to begin their two-semester organic chemistry sequence in the spring for the first pre-pharmacy year. By completing the second semester of organic chemistry in the fall of the second pre-pharmacy year, students will then be eligible to take a new pre-pharmacy biochemistry course and an immunology course during the spring of the second pre-pharmacy year. These courses were previously taught in the curriculum after entry to the professional program. The new pre-pharmacy curriculum also includes a required statistics course to provide a uniform level of preparation for students beginning the professional program. The remainder of the two-year pre-pharmacy curriculum remains the same. Students completing their pre-pharmacy course work on other campuses may require three years to complete their pre-pharmacy requirements because of the need to take the traditional two-semester sequence of general chemistry before moving on to organic chemistry. Pre-pharmacy students on the West Lafayette campus have the option of choosing to spread the pre-pharmacy course requirements over three years, or they may choose to earn a B.S. degree in a variety of majors prior to entering the Pharm.D. program.

## Key Features and Structure of the Pharm.D. Curriculum

The increased foundational requirements in the pre-pharmacy curriculum will allow the faculty to place an emphasis on patient care and knowledge of drug products early in the curriculum.

The new curriculum has an increased emphasis on several areas that have or are becoming important in the practice of pharmacy. These include expanded instruction on public health and wellness, biotechnology, pharmacogenomics, parenteral drug products, informatics, patient medication safety, clinical pharmacokinetics, over-the-counter medications and dietary supplements, cultural competence, and health policy applications. The emphasis on these areas can be seen by reviewing the course titles in the accompanying curriculum listing. The new curriculum will have a skills lab each of the first six semesters that is designed to allow students to develop “hands-on” clinical practice skills that draw on the didactic courses taken that semester. Another key feature of the curriculum is the integration of basic science and clinical practice content in many of the core courses. For example, instead of stand-alone courses in medicinal chemistry or therapeutics, the new curriculum has a sequence of five, six-credit integrated pharmacotherapy courses that bring together faculty from the departments of Medicinal Chemistry and Molecular Pharmacology and Pharmacy Practice to teach these courses jointly.

P-1 students will have their first Introductory Pharmacy Practice Experience (IPPE) in the Purdue University Pharmacy during either the fall or spring semester. As a part of this experience, students will have an introduction to commonly prescribed drug products as a laboratory preparation component of the course. During the P-2 and P-3 years, students will have their core courses taught in a 12-week time frame instead of the traditional 16 weeks (however the total number of hours in the class-room will remain the same). Half of the class will be on an IPPE rotation during the first four weeks of each semester of the P-2 (Community Operations I) or the last four weeks of each semester of the P-3 (Hospital Operations I) years. The half of the class that is on campus all semester will be able to take one or two intensive elective courses during a four week module. The Advanced Pharmacy



## The New Purdue Doctor of Pharmacy Curriculum

Practice Experience (APPE) rotations will total 40 weeks during the P-4 year.

Throughout the curriculum there will be assessment processes built into each core course and the results of these assessments will be documented through a student portfolio system. The portfolios will emphasize self-reflection and self-assessment of strengths and weaknesses. Professional growth and development of students will be targeted throughout the curriculum, as well.

### Benefits for Students and Preceptors

Students will enter the professional program with a stronger basic science foundation. This will allow the faculty to emphasize patient care and drug product applications early in the curriculum. Through the skills labs students will have an opportunity to develop their practice skills earlier. The expanded IPPE portion of the curriculum is designed to provide a uniform foundation for clinical problem-solving skills prior to entry into APPE experiences. The IPPE experiences will be offered in specified time blocks each year to facilitate scheduling for preceptors. Preceptors will see more uniform preparation of students entering the APPE experience which should facilitate the process of providing guidance for their rotation students. The College is working to develop additional instructional resources and training materials for preceptors, as well.

## Pre-Pharmacy Curriculum for West Lafayette campus students (Pre-Pharmacy minimum requirement 60 Credit Hours, including the courses below)

### PP1 Prepharmacy - Semester 1

(5)	CHM	10901	Gen. Chemistry with Biological Focus
(3)	MA	22300	Intro Analysis Calculus I
(4)	BIOL	11000	Fundamentals Biology I
(4)	ENGL	10600	First-Year Composition
(1)	PHPR	10000	Pharmacy Orientation I**
(17)			

### PP3 Prepharmacy - Semester 3

(4)	MCMP	20500	Organic Chemistry II
(3)	BIOL	30100	Anatomy & Physiology I
(4)	PHYS	22000	General Physics I
(3)	STAT	30100	Elementary Statistical Methods
(1)	PHRM	20000	Pharmacy Orientation II**
(0-2)			Electives
(15-17)			

### PP2 Prepharmacy - Semester 2

(4)	MCMP	20400	Organic Chemistry I
(3)	MA	22400	Intro Analysis Calculus II
(4)	BIOL	11100	Fundamentals Biology II
(3)	AGEC	21700	Economics
(0-3)			Electives
(14-17)			

### PP4 Prepharmacy - Semester 4

(3)	MCMP	XXXXX	Biochemistry I
(3)	BIOL	30200	Anatomy & Physiology II
(4)	BIOL	22100	Intro to Microbiology
(3)	MCMP	XXXXX	Immunology
(0-4)			Electives
(13-17)			

## Doctor of Pharmacy Curriculum (140 cr. hrs./Graduation)

### P1 1st Professional Year - Semester 1

(1)	PHRM	82000	Skills Lab I
(1)	PHRM	82200	PUP-IPPE***
(4)	PHRM	82400	Principles of Patho-physiology, MDCH, Drug Action, ADME, and Toxicology
(3)	PHRM	82600	Intro to Pt Care/Pt Assess/Communications
(3)	PHRM	82800	Dosage Forms I
(1)	PHRM	83000	Pharmacy Law & Ethics
(1)	PHRM	83200	Principles of Diagnosis, Labs, Monitoring
(1)	PHRM	83400	Pharmaceutical Calculations
(2)	PHRM	XXXXX	Biochemistry II
(17)			

### P2 2nd Professional Year - Semester 3

(1)	PHRM	84000	Skills Lab III
(4)	PHRM	84200	Community Operations I - IPPE****
(6)	PHRM	84400	Integrated Pharmacotherapy
(3)	PHRM	84600	Principles of Pharmacokinetics
(3)	PHRM	84800	Drug Info/Literature Eval./Biostatistics
(0-3)			Electives
(17-20)			

### P3 3rd Professional Year - Semester 5

(1)	PHRM	86000	Skills Lab V
(4)	PHRM	86200	Institutional Operations I - IPPE****
(6)	PHRM	86400	Integrated Pharmacotherapy
(2)	PHRM	86600	Biotech./Adv. Parenteral Dosage Forms
(3)	PHRM	86800	Patient Safety & Informatics
(1)	PHRM	87000	Health Policy Applications
(0-3)			Electives
(17-20)			

### P4 4th Professional Year - Summer and Semesters 7 & 8

(4)	PHRM	88000	Institutional Operations II - APPE
(4)	PHRM	88100	Community Operations II - APPE
(8-12)	PHRM	88500	Inpatient - APPE
(8-12)	PHRM	88800	Ambulatory - APPE
(8-12)	PHRM	88900	Elective - APPE
(40)			

### P1 1st Professional Year - Semester 2

(1)	PHRM	82100	Skills Lab II
(1)	PHRM	82200	PUP-IPPE***
(6)	PHRM	82500	Integrated Pharmacotherapy
(3)	PHRM	82700	Public Health/Wellness/Self Care/OTC
(2)	PHRM	82900	Dosage Forms II/Parenterals
(2)	PHRM	83100	Health Care Systems
(0-4)			Electives
(15-19)			

### P2 2nd Professional Year - Semester 4

(1)	PHRM	84100	Skills Lab IV
(4)	PHRM	84200	Community Operations I - IPPE****
(6)	PHRM	84500	Integrated Pharmacotherapy
(2)	PHRM	84700	Principles of Pharmacogenomics
(2)	PHRM	84900	Population Health Management
(0-4)			Electives
(15-19)			

### P3 3rd Professional Year - Semester 6

(1)	PHRM	86100	Skills Lab VI
(4)	PHRM	86200	Institutional Operations I - IPPE****
(6)	PHRM	86500	Integrated Pharmacotherapy
(1)	PHRM	86700	Introduction to APPE
(2)	PHRM	86900	Practice Management & Marketing
(2)	PHRM	87100	Pharmacy Law
(0-4)			Electives
(16-20)			

\*\* Optional/Strongly recommended for West Lafayette Campus Students  
\*\*\* Semester 1 or 2

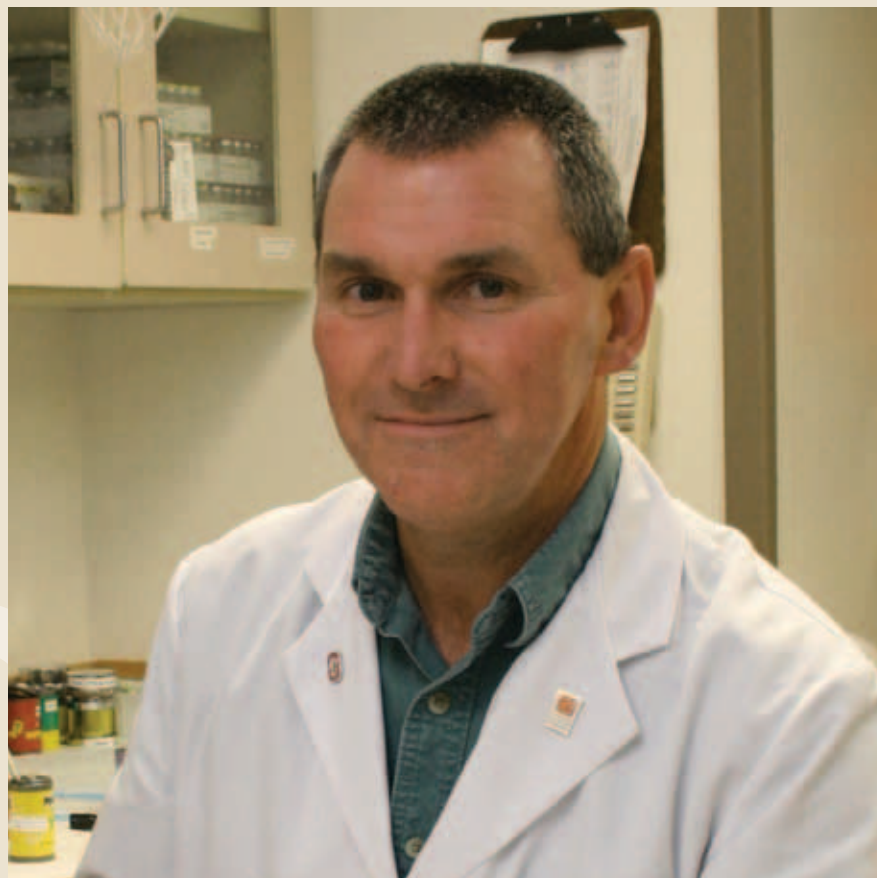
\*\*\*\* Courses to be scheduled during either semester (four weeks during spring or fall semester for P-2 & P-3 years).



In 1970, **George Hinkle** (BS 1975 and MS 1977) left the French Lick, IN community, famous for one of the most outstanding basketball players from the State of Indiana (Larry Bird) and headed north to Purdue University to enroll in the School of Pharmacy. He entered when the School was in the process of developing a series of courses leading to practice in the newly emerging area of nuclear pharmacy. George participated in these courses. At the time of graduation, he and his wife, Cindy, felt the need to remain in Indiana. Unfortunately, no nuclear pharmacy positions were available in the area, so instead he considered employment in a retail chain. Hours before he signed on with the retail chain, Dr. Stan Shaw, now Professor Emeritus, visited him at the retail pharmacy location. Dr. Shaw had secured a graduate student assistantship that would allow George the opportunity to continue his studies in nuclear pharmacy in the Department of Bionucleonics. George accepted, and it was a life changing decision.

Upon completion of his M.S. degree, George remained at Purdue another year as an instructor. In 1978, he joined the faculty in the College of Pharmacy at the University of Oklahoma and remained there until 1981 when he accepted a joint position at The Ohio State University as Clinical Assistant Professor in the Department of Radiology, College of Medicine, and in the Division of Pharmacy Practice and Administration, College of Pharmacy. In 1996, he was promoted to Associate Professor in the Division of Pharmacy Practice and Administration. He has served as Director of Nuclear Pharmacy Services and has developed a nuclear pharmacy educational program in the College of Pharmacy, as well as a highly successful Nuclear Pharmacy Certificate Program to serve pharmacy practitioners wishing to enter nuclear pharmacy.

In addition to his service to education and practice, George has played an active role in research in the development



## NUCLEAR PHARMACY ALUM **George Hinkle** *The Road to Success Started Here*

and utilization of radiopharmaceuticals at The Ohio State University. He is the author or co-author of over 100 peer reviewed publications and 30 book chapters, and has presented material to groups at over 150 meetings. He has been involved in six-figure grants nearly every year and recently was a co-investigator for the Ohio Research Scholars Program grant entitled "Ohio Imaging and Innovation Network" funded at over \$24 million.

George has been active in the APhA since the early 1980s. He has served as Chair of the Section on Nuclear Pharmacy, and in 2011 will serve as Chair of the Board of Pharmacy Specialties. His many contributions to the practice of nuclear pharmacy have been recognized by his peers and resulted in being named as the 2010 recipient of the *William H. Briner*

*Distinguished Achievement Award in Nuclear Pharmacy Practice* by the APhA Academy of Pharmacy Practice and Management. Two years prior, he was the recipient of the *Daniel B. Smith Practice Excellence Award*—the top practice award given by the APhA.


While contributing at the highest levels of practice and conducting research and other scholarly activities, George has not ignored his family or his community. He is a devoted husband, father of two lovely daughters, and a grandfather. He is active in leadership in his church and the community. Indeed, he has taken the first beginnings from Purdue and accomplished a tremendous amount in a career that will continue on for several years. Our hats off to you George, and to Dr. Shaw for mentoring another outstanding nuclear pharmacy practitioner.





The *Garnet E. Peck Symposium* was held on Thursday, October 14, 2010, on the West Lafayette campus. The Symposium honors Dr. Garnet Peck, Professor Emeritus of Industrial and Physical Pharmacy (IPPH) and a pioneer in industrial pharmacy. This year's Symposium addressed two themes:

1) the use of nanotechnology in drug delivery and  
2) drug formulation for pediatric use. Speakers for the nanotechnology theme included Dan Feldheim (University of Colorado), Justin Hanes (Johns Hopkins), Bumsoo Han (Purdue University, Biomedical Engineering), and Yoon Yeo (IPPH). Speakers for the pediatric formulation theme included Gregory Kearns (Children's Mercy Hospital, Kansas City), Anne Zajicek (National Institutes of Health), Jamie Renbarger (Indiana University School of Medicine), and Steve Byrn (IPPH). Bio-sketches and abstracts of the speakers are available at [www.ipph.purdue.edu/peck/](http://www.ipph.purdue.edu/peck/).

The Symposium was funded in part by the Anderson Lecture Fund and the Department of Industrial and Physical Pharmacy. 



Speakers and honoree at the Nanotechnology in Drug Delivery session include from L to R: Hanes, Yeo, Peck, Han, and Feldheim



Speakers and honoree at the Pediatric Drug Formulation session include from L to R: Kearns, Renbarger, Peck, Byrn, and Zajicek


## ALUMNI SHARE PHARMACY MEMORABILIA

On September 22, 2010, Dean Craig Svensson, Director of Advancement Chris Smith, and Dana Neary, Manager of Alumni Relations, met with John (BS 1963) and Jenifer (BS 1992) Schreiner at their privately owned pharmacy museum in Valparaiso, Indiana. The History of Pharmacy Research Center houses an extraordinary collection of pharmacy memorabilia, and the group enjoyed viewing the many displays during their tour. John's story of how he started collecting artifacts and how they grew to transform into an impressive museum is intriguing. The College of Pharmacy invites you to read his story at [www.pharmacy.purdue.edu/articles/2010-09-22.Museum/](http://www.pharmacy.purdue.edu/articles/2010-09-22.Museum/).

The College also is excited that John, President of Care Pharmaceutical Services, and Jenifer, a pharmacist at Saint Anthony's Hospital, have agreed to share some of their pharmacy artifacts on campus. Different items will be displayed each semester in the cases located in the Heine Pharmacy Building.

"We hope that our collection of artifacts will accomplish a few different goals," says Jenifer. "We hope that the items will show the evolution of the practice of pharmacy over the decades and inspire others to want to learn about the history and begin collecting to keep the chain of interest alive. Also, we hope that the written materials, as well as the physical objects, could be included or studied with educational and research material by faculty and staff for educational purposes. Giving back to Purdue in even this simple way is a proud moment for both of us as alumni, and we hope others will find the information interesting and conversational."



For more information about the History of Pharmacy Research Center, you may contact: (219) 924-5807 or (219) 628-1991  
[jaspharmacy@comcast.net](mailto:jaspharmacy@comcast.net)  
[www.pharmacyantiques.com](http://www.pharmacyantiques.com) 

John Schreiner poses in his pharmacy museum



More photographs of the museum can be viewed at [www.pharmacy.purdue.edu/features/2010-09-22.Museum/](http://www.pharmacy.purdue.edu/features/2010-09-22.Museum/)

# PRECEPTOR PERCEPTIONS

On April 30, 2010, the College of Pharmacy recognized outstanding preceptors at the Graduation Banquet. Dr. Maria Papadakis received the “Preceptor of the Year Award” for her dedication to the teaching and mentoring of our pharmacy students. Dr. Kevin Sowinski received the “Faculty Preceptor of the Year Award.” Please help us congratulate these fine individuals for their dedication to serving our students.



## Preceptor of the Year Award

**Maria Papadakis** (PharmD 2002) accepted the position of Corporate Clinical Pharmacy Manager with the Sisters of Saint Francis Health Services in October 2010, where she hopes to enhance clinical pharmacy initiatives with teams of clinical pharmacists to better serve patients safely and effectively. Prior to this, she was Clinical Pharmacy Coordinator at St. Anthony Memorial Hospital, Michigan City, Indiana. She has served the Sisters of St. Francis Health Services for the past eight and half years, in which time she has been involved with mentoring students from both

Purdue and Butler University, and most recently Chicago State University.

Although Maria’s current position doesn’t allow her to continue precepting duties as of yet, her future plans include the initiation of a clerkship rotation allowing students the opportunity to experience the corporate side of hospital pharmacy. Until then, Dr. Papadakis says she’ll miss seeing the energy from the dynamic students who are so eager to get involved and help influence patient care, as well as those who are a little more reserved. “I enjoy seeing the ‘eyes open wide’ when they see the impact they—as one person—can have on patient care,” she says.

### How do/did you involve students in your rotation to build your practice? How do/did you utilize students serving rotations to advance patient care services?

*The students are involved in real day-to-day tasks dealing with the operational and clinical side of hospital pharmacy, including assessing patient charts to evaluate medication profiles for the prevention of drug interactions. They also get involved in the administration/research side of drug monographs, drug utilization reviews, and pharmacy and therapeutic preparations. Students advance patient care by the new and innovative thought processes they bring to the table.*

*They research new medications that are on the market in addition to all of the new medical guidelines. They are part of the hospital pharmacy team, so together we all improve patient care.*

### What advice do you give students entering practice? What aspects of professionalism do you impress upon students?

**Believe in yourself** and all of the great knowledge that you have gained from Purdue. You are entering into a profession that requires constant learning, and professional development is always on the “to do” list.

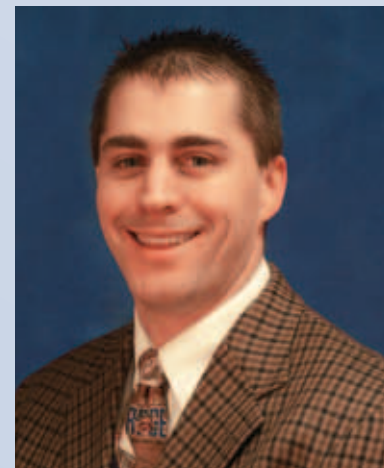
**Self motivation** is critical in your journey. Remember to challenge yourself and find how you can be involved in furthering the profession. Don’t be afraid to think outside of the box.

**Be a team player.** Remember that everyone brings something to the table and no one works alone in order to truly run a good ship.

**Professionalism is key.** It is needed to build trust with not only your patients, but with your colleagues in other areas of medical disciplines.

## Outstanding Faculty Preceptor Award

**Dr. Kevin Sowinski** has served on the faculty of Purdue University since 1995 and is currently Professor of Pharmacy Practice. He is located in Indianapolis at Wishard Health Services in Adult Medicine. Interacting with students in a non-classroom setting is what he enjoys most about precepting. “The clerkship environment gives students a chance to grow in a totally different environment than the classroom,” says Dr. Sowinski. “In order for students to be successful in the clerkship experience, they need to develop and enhance their problem solving skills.” Another perk to being a faculty preceptor: “The day is never the same!”





**The Preceptor Awards were presented to Maria Papadakis and Kevin Sowinski by Brian Shepler (L), Christy Nash (R), and Dean Craig Svensson (far R). Dr. Papadakis, like so many other preceptors, believes we must reach out to the students and instill in them how passionate we are about the profession. "Help them trust in their knowledge to continue to further the profession in one that we all can continue to be very PROUD!"**

**How do you involve students in your rotation to build your practice? How do you utilize students serving rotations to advance patient care services?**

*Students on the Medicine Service at Wishard don't necessarily help to build the practice at Wishard, since we have eight medicine teams. But for Purdue faculty, the medicine students are an extension of us. The students serve as the clinical pharmacists on their teams. They function independently with the faculty member's daily supervision. They are responsible, again with appropriate supervision, in all activities that clinical pharmacists are responsible for at Wishard.*

**What advice do you give students entering practice? What aspects of professionalism do you impress upon students?**

*I try to impress upon students that this is the year to explore the profession for what organizations they are most interested in contributing to when they leave Purdue. While some go on for further education in residencies, graduate school, etc., I believe the P-4 year is the best time to start to develop those relationships. It is much harder to do once they finish.*

*I think the most important trait that any health care professional can have is humility. There is plenty of opportunity for practicing humility during their P-4 year (like I think we all do). It's important for students to realize that they won't remember everything that they have learned in the classroom and that this year (and their whole career, hopefully) is a chance to continue to grow and apply what they have learned and experienced.*



# Purdue's Forty Under 40

Two College of Pharmacy alumni have been nominated and selected as part of the Purdue Alumni Association's "40 under 40." These forty, representing the best and brightest young alumni, were selected from over 350 nominations by Purdue alumni, faculty, staff, and friends. The College is proud to have Susan Graf (BS 1995) and Christopher Scott (BS 1998, PharmD 1999) on the top 40 list.

You can read more about these individuals in the July/August 2010 issue of the *Purdue Alumnus* found online at [www.purduealum.org/2010alumnus/?firstPage=16](http://www.purduealum.org/2010alumnus/?firstPage=16). Scott is featured on page 22 and Graf on page 25.



Graf



Scott (Photo by Chris Bucher)



Greetings Pharmacy Alumni,

We have had an active fall at Purdue, and I hope you enjoy reading about the many pharmacy alumni events in this issue of *The Purdue Pharmacist*.

I am pleased to announce that two Pharmacy alumni were selected to serve on the Purdue Alumni Association (PAA) Board beginning in July 2010. Mina Alsaraf (PharmD 2010) and Miles Davis (BS 1979, PhD 1983) will no doubt represent the College of Pharmacy well, and it is a fantastic opportunity to have our alumni represented on the board. Mina is a Rutgers Pharmacy Industry Health Policy and Advocacy Fellow at Bristol-Myers Squibb Company, and Miles is President and CEO of Sovereign Pharmaceuticals, Ltd. Congratulations to them both.

I would also like to congratulate two of our alumni for being recognized by the Purdue Alumni Association among the University's best and brightest young Boilermakers. Chris Scott (BS 1998, PharmD 1999) and Susan Graf (BS 1995) were recognized as one of the "40 Under 40." You can read more about this on page 29.

The Purdue Pharmacy Alumni Association (PhAA) Board will be meeting on campus in June to finalize the board's plans for fall alumni programs, and they will be hosting the 2011 BoileRx Golf Classic at that time. We invite all of you to participate in our alumni activities and hope you enjoy reconnecting with the College.

Hail Purdue!

Dana Neary  
Manager of Alumni Relations & Special Events



Alsaraf



Davis

## 2011 Pharmacy Events Calendar

DATE	EVENT
February 25	Boilermaker Ball <a href="http://www.purduealumni.org/events/boilermaker-ball/">www.purduealumni.org/events/boilermaker-ball/</a>
April 9	Pharmacy Spring Fling
May 15	Pharmacy Commencement
June 2	BoileRx Golf Classic
September 11	White Coat Ceremony
September 15-16	Pharmacy Class of 1961 Reunion Weekend
October 21	Student and Alumni Chili Supper
October 22	Pharmacy Homecoming Tailgate
November 11-12	Pharmacy Class of 1976 Reunion Weekend

For more information regarding these events, please visit [www.pharmacy.purdue.edu/events.php](http://www.pharmacy.purdue.edu/events.php) or contact Dana Neary, Manager of Alumni Relations and Special Events, at [nearyd@purdue.edu](mailto:nearyd@purdue.edu) or (765) 494-2632.



# 15th Annual BoileRx GOLF CLASSIC



**Lunch will be served at 11:30  
Shotgun start at 1:00**

### Early Bird Registration!

Be an Early Bird – Not a Late Bloomer!  
Submit your paid registration on or  
before May 1, 2011 and pay only  
\$120 per golfer.

Late Bloomer Registration Fee:  
(Registrations received after May 1)  
\$130 per golfer

Registration includes:  
Practice Range Balls • Golf Cart •  
Green Fees • Soft Drinks & Beer •  
Lunch • Prize Holes • Door Prize

### Send Registration Form by May 1 to:

BoileRx Golf Classic  
Purdue University  
Heine Pharmacy Building, Rm. 104  
575 Stadium Mall Drive  
West Lafayette, IN 47907-2091

Or by FAX to (765) 494-9587

### Have Questions? Want to Help? Want to Sponsor a Hole?

Contact Dana Neary at  
(765) 494-2632 or neary@purdue.edu.  
Forms can also be found at  
[www.pharmacy.purdue.edu/boilerx](http://www.pharmacy.purdue.edu/boilerx).  
Feel free to make copies of this form  
as needed.

## 2011 BOILERX REGISTRATION FORM

Name \_\_\_\_\_

Address \_\_\_\_\_

City \_\_\_\_\_ State \_\_\_\_\_ Zip \_\_\_\_\_

Phone \_\_\_\_\_

E-mail Address \_\_\_\_\_

Purdue Alumni?  Yes  No

Sign me up for a four-person scramble

Other golfers on my team are:

\_\_\_\_\_  
\_\_\_\_\_  
\_\_\_\_\_

Place me on a team

Twenty-five dollars of each golfer's registration fee will support both annual and endowed scholarships and qualifies as a charitable deduction.

Number of **Early Bird** registrations (prior to May 1) \_\_\_\_\_ x \$120 = \$\_\_\_\_\_

Number of **Late Bloomer** registrations (after May 1) \_\_\_\_\_ x \$130 = \$\_\_\_\_\_

**Sponsor a Pharmacy Student** to join your foursome \_\_\_\_\_ x \$105 = \$\_\_\_\_\_

Additional gift to the **College of Pharmacy Scholarship Fund** \$\_\_\_\_\_

**TOTAL REGISTRATION AMOUNT** \$\_\_\_\_\_

*Mulligans and Beat the Faculty chances will be available at the event.*

My check made payable to **Purdue Foundation** is enclosed.

**Charge my credit card:**  MasterCard  Visa  American Express  Discover

Charge will appear as "membership dues" through the Purdue Alumni Association on your credit card statement.

Card number \_\_\_\_\_ - \_\_\_\_\_ - \_\_\_\_\_ - \_\_\_\_\_

Expiration date: \_\_\_\_\_ / \_\_\_\_\_

Signature \_\_\_\_\_

## Faculty News



The College is pleased to announce the appointment of Dr. **Steven Abel** as Associate Dean

for Clinical Programs. As Associate Dean, Dr. Abel will continue providing oversight for our Experiential Programs, Continuing Education, and on-campus ambulatory pharmacy for which he has held responsibility over the past three years in his role as Assistant Dean for Clinical Programs. In addition, Dr. Abel will provide oversight for the recently formed Center for Medication Safety Advancement. He will also continue to serve as Bucke Professor and Head of the Department of Pharmacy Practice.



A publication of a special issue of the *Journal of Pharmaceutical Sciences* was dedicated to honoring

the pharmaceutical sciences accomplishments of Dr. **Steven Byrn**, Charles B. Jordan Professor of Medicinal Chemistry. You can view Volume 99, Issue 9 at <http://onlinelibrary.wiley.com/doi/10.1002/jps.v99:9/issuetoc>.



Dr. **Mark Cushman**, Distinguished Professor of Medicinal Chemistry, is working on the design and synthesis of topoiso-

merase I inhibitors. The work is important because topoisomerase I is a validated target for the development of anticancer agents. Two of his compounds have entered phase 1 clinical trials at the National Cancer Institute for the treatment of cancer. More details about the clinical trials can be found at <http://clinicaltrialsfeeds.org/clinical-trials/show/NCT01051635>.



Jane Krause with  
IPA President  
Suellen Sorensen

**Jane Krause**, Clinical Associate Professor of Pharmacy Practice, received the Indiana Pharmacists Alliance (IPA) 2010 *President's Award* at its annual convention held in September. The award is presented for "service above and beyond, and dedication to the advancement of the state pharmacists alliance." Krause serves on the IPA Education Council which is responsible for planning and coordinating educational programming for the Alliance. She also was involved with the coordination and organization of the IPA NAPLEX Review this past summer and continues to promote IPA to Doctor of Pharmacy students. "I was very honored to receive this award, and I sincerely enjoy working with the IPA staff and officers in their efforts to enhance the profession of pharmacy and serve the pharmacists and student pharmacists in Indiana," says Krause.

## SMOKE-FREE CAMPUS

Purdue: Committed to a Healthy Planet

Purdue University's smoke-free policy is designed to support a healthy campus and limit exposure to secondhand smoke, which has been determined unsafe at any level according to the EPA. As of July 1, 2010, smoking is no longer permitted on campus except in a limited number of designated areas. To learn more, please visit [www.purdue.edu/physicalfacilities/smokefree/](http://www.purdue.edu/physicalfacilities/smokefree/).





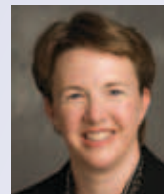
(L to R) Gloria Sachdev, Emily Foster from Cummins Inc., Kyle Hultgren, and Harry Totonis

The 5th Annual Safe-Rx Awards Ceremony was held on September 21, 2010 in Washington, D.C. The Safe-Rx Awards “celebrate leadership and exceptional commitment to advancing health care safety, efficiency and quality through the use of e-prescribing.” Harry Totonis, Surescripts CEO, presented the awards to the top 10 states. Indiana ranked number 9 this year—the first time it has made the top 10 list. Purdue University played a significant role in increasing e-prescriptions in the state, and Dr. **Kyle Hultgren**, Managing Director of the Center for Medication Safety Advancement at the College of Pharmacy, and Dr. **Gloria Sachdev**, Clinical Assistant Professor of Pharmacy Practice, accepted the Safe-Rx Award on behalf of the state of Indiana.



**Cory Smith** joined the Department of Pharmacy Practice as Clinical Assistant

Professor in July 2010. Dr. Smith received his PharmD from Purdue in 2009. He then completed a PGY1 Pharmacy Practice Residency through Purdue and Mathes Pharmacy in New Albany, Indiana. His areas of interest are in diabetes and public health. He is currently conducting a research study over provision of a diabetes education curriculum for public school faculty and personnel who interact with students with diabetes. The goal is to increase the disease state knowledge, ability, and confidence of those in the public school system who supervise children with diabetes as well as increase the confidence of the parents whose children attend these schools.



Dr. **Elizabeth Topp**, Head of the Department of Industrial and Physical Pharmacy and Dane O. Kildsig Chair in Industrial and Physical Pharmacy, was inducted as a Fellow of the American Association of Pharmaceutical Scientists at their annual meeting in November 2010.



## Pharmacy Alumni Online Survey

The Pharmacy Alumni Association Board (PhAA) wants to better serve YOU, but we need your input! We invite all pharmacy alumni to take a few minutes to answer the questions in our online survey.

Please visit

[www.pharmacy.purdue.edu/phaasurvey](http://www.pharmacy.purdue.edu/phaasurvey)

and let us know how we can help you get the most out of your alumni experience.

## ALUMNI, STAFF & STUDENT ACTIVITIES



### Class of 1960 Reunion

The Purdue Pharmacy Class of 1960 visited campus the weekend of September 24-25, 2010. The class participated in several pharmacy events as well as activities planned by the Purdue Alumni Association as part of their Alumni Weekend. A group of students from our pharmacy student organization APhA-ASP offered health screenings during registration at the Dauch Alumni Center.

The Pharmacy weekend's activities kicked off with a luncheon and brief update on the College by Dean Craig Svensson in the Anniversary Drawing Room in the Purdue Memorial Union. Professors Emeriti Patrick Belcastro and Garnet Peck attended the luncheon to visit with their former students. Alumni had a great time reconnecting and reminiscing over photographs of themselves taken in 1960.

On Saturday, Jane Krause, Clinical Associate Professor of Pharmacy Practice, and Rachel Snodgrass, third year PharmD student, gave a tour of the Pharmacy Building. At the end of the tour, Dr. Belcastro gave a brief overview of how things have changed during the past fifty years.



Pharmacy 1960 alumnae, Margery Hunter Jansen, shows off her cords. On the back, she added a special panel for the 50th Reunion, and she even let Dr. Belcastro add his signature during the weekend

### Varro E. Tyler Distinguished Lectureship

The College of Pharmacy was pleased to present the *Varro E. Tyler Distinguished Lectureship* on November 11-12, 2010. This year's lectureship featured Richard Silverman, John Evans Professor of Chemistry, Department of Chemistry, Department of Molecular Biosciences, Center for Molecular Innovation and Drug Discovery, Chemistry of Life Processes Institute, Northwestern University. The lectures were held in the Lawson Computer Science Building at Purdue University and included discussion on "Drug Discovery: Ingenuity or Serendipity?" and "Selective Neuronal Nitric Oxide Synthase Inhibitors for the Prevention and Treatment of Neurodegenerative Diseases."



### CVS Supports Scholarships

Ronald Snow, Manager of Professional and College Relations with CVS/Caremark Corporation, was pleased to present Dean Craig Svensson with a check for \$5,000 for scholarships in the College of Pharmacy in August 2010. The College greatly appreciates the continued support of CVS through the years.

## ALUMNI, STAFF & STUDENT ACTIVITIES



*Upperclassman Kristin Muccigrosso and her group of P-1 students discuss some of the moral and ethical issues they will face during their academic and professional journeys*



*P-1 students attempt to line dance on a telephone pole while juggling a ball (great practice for multi-tasking)*

### Pharmacy Orientation

Members of the Class of 2014, newly admitted to the professional program, participated in an orientation to facilitate their transition to the professional program. The expanded orientation, now in its second year, was designed, organized, and almost totally facilitated by upperclassmen. Students new to the campus were welcomed as Boilermakers on August 20, 2010 and learned about the campus, its traditions, and how to survive in West Lafayette. Upperclassmen shared their experiences and provided tours of campus.

All new P-1 students participated in two full days of orientation, fun, and fellowship. Faculty, staff, upperclassmen, and alumni welcomed the P-1 students to the Purdue Pharmacy Family and provided suggestions, guidance, and well wishes for success in the program. The Class of 2014 had the opportunity to get to know each other and prepare for the year, as well as gain a sense of professionalism necessary for success. Upperclassmen were also given the opportunity to hone their leadership and organization skills.

### Pharmacy First Nighter

Not even a little rain could keep pharmacy students from attending the Pharmacy First Nighter on September 1, 2010! Several hundred students filled the hallways learning about our Pharmacy student organizations. Rho Chi held its annual Silent Auction and raised over \$2,000 for scholarships. CVS Corporation graciously sponsored the evening, and their representatives were on hand to greet students. Students enjoyed meeting fellow classmates, faculty, staff, and alumni.



*The Pre-Pharmacy Club*

## ALUMNI, STAFF & STUDENT ACTIVITIES

### Kroger Wins AFP Award

The Indiana Chapter of the Association of Fundraising Professionals (AFP), celebrated its 2010 Philanthropy Awards on November 18, 2010 in Indianapolis. This event marked the 27th year that AFP has recognized individuals, civic organizations, foundations, corporations, and small businesses for their important contributions made to communities across Indiana. Purdue's College of Pharmacy was proud to nominate The Kroger Company as an "Outstanding Corporation."

"Kroger Central Division's community engagement in 2009 included thousands of volunteer hours, as well as \$11.7 million in support for the local communities we serve," comments Gregory Fox, Kroger Pharmacy Merchandiser. "We sincerely appreciate this recognition from the Association of Fundraising Professionals, as well as the privilege of collaborating with so many of their members as we work side-by-side to serve the communities we share."



Gregory Fox



Judith Jacobi Mowry receives the Sperandio Award

### Glen J. Sperandio Award

On September 24, 2010 the College of Pharmacy held a special reception for a group of Alumni and Friends. Over one hundred supporters of the College filled Schleman Hall Lobby (the former Pharmacy Building) for a dessert reception.

The group celebrated the awarding of the 2010 *Glen J. Sperandio Award*. The award recognizes a licensed pharmacist with a minimum of 10 years of service to the profession who is an alumna/alumnus of the College. Dean Craig Svensson presented the award to Dr. Judith Jacobi Mowry (BS 1979), a Critical Care Pharmacist at Clarian Health-Methodist Hospital in Indianapolis.

The group ended the evening by attending the Bill Cosby Convocation in Elliott Hall of Music.



Students celebrate after the ceremony

### White Coat Ceremony

The College of Pharmacy celebrated the Class of 2014 at the White Coat Ceremony on September 12, 2010. Family, friends, faculty, and staff welcomed the class at a program in Loeb Theatre. Marilyn Speedie (BS 1970, PhD 1973, 1993 Distinguished Alumna), Dean of the College of Pharmacy at the University of Minnesota, was the keynote speaker for the ceremony. She challenged the class to continue the tradition of leadership set out before them by other Purdue pharmacy alumni.

Gregory Fox congratulated the class on behalf of Kroger, sponsor of the event. Pam Ringor (BS 1997), President of the Purdue Pharmacy Alumni Board, and Indiana Pharmacist Alliance representative Ron Snow gave a few remarks of encouragement and congratulations. Twenty five faculty were on hand to assist the class with their white coats. As tradition, the ceremony concluded with the reciting of the *Oath of the Pharmacist*.

## CLASS NOTES



### Purdue Proud

In April 2010, five proud Purdue alumni and Kappa Epsilon members enjoyed a Mexican cruise. Participants include from left to right **Jane Hammock** (BS 1972), **Linda McElhiney** (BS 1984), **Margaret Haehl** (BS 1972), **Pat Nemeth Jehning** (BS 1972), and **Sandy Rudbeck Hughes** (BS 1972).

#### 1940-1949

**David Johnson** (BS 1948) is pleased to announce the birth of his grandson,



Mason Charles, born on the Fourth of July in Chicago. Mason's parents are Candace and David Johnson (BS 2004, School of Management).

**Joseph Longa** (BS 1949) received a chevalier of the Legion of Honor in November 2010. He enlisted in the Army at age 18 and fought in the Battle of the Bulge in WWII. The honor, ordinarily reserved for French citizens, has been presented to more than 100 WWII veterans from the U.S. in the past two years. Now age 87, he worked as a pharmacist for 61 years and retired last year.

#### 1950-1959

**David Brown** (BS 1954) shares that he has been retired from Wal-Mart since June of 1996. He retired again from CVS in June of 2009 to care for his wife, Wilma, whom he married on December 23, 1986.

**Frank Deardorff** (BS 1957, 1991 Distinguished Alumnus) and his wife, Beverlee, relocated from New Jersey to Denton, Texas. This is the eighth state in which they have lived. After having visited all 50 states, over 100 countries, and all seven continents, they decided it was time to try another new state!

**Walter Gloyer** (BS 1956) is pleased to share that Gloyer's Pharmacy, located in Tomball, TX, celebrated its 50th anniversary in August 2010. After

working for a year after graduating from Purdue, Walter was drafted and sent to Germany in the Army as a pharmacist at the 97th General Hospital in Frankfurt. In 1959, he married Karin, a German citizen, and moved to Houston. The following year, he bought an existing pharmacy in Tomball. They have three sons, one of whom now manages the pharmacy since Walter's retirement.

#### 1960-1969

**Robert Gibson** (BS 1969) and his wife, Janice, welcomed a new



granddaughter, Juliet Gibson, to the family on September 13, 2010.

## CLASS NOTES

### 1970-1979

**Robert Furto** (BS 1971) became Director of Pharmacy Services in March of 2010 at the NorthShore Health Clinics in Northwest Indiana under the leadership of CEO Jan Wilson. After being in hospital management for 40 years, it is a perfect way for Bob to finish his pharmacy career in this clinical setting.

**Carl "Fritz" Hayes** (BS 1979) was recently elected Vice Chair of the Florida Board of Pharmacy. He is currently serving on the board as appointed by Governor Crist.

**Rebecca (Cauble) Marshall** (BS 1974) (y.salemapothecar@insightbb.com) celebrated owning and operating the Salem Apothecary for 25 years on August 13, 2010. The apothecary is housed in a 130-year-old building located in Salem, IN, and was the professional home of Lula Desse Rudder (PhG 1903), one of the first women to graduate from the Purdue School of Pharmacy.

Retiring after 38 years, **Joseph Zika** (BS 1972) finally has time to do things he's always wanted to do, including a vigorous reading agenda and dabbling in writing Sci-Fi. He has a lifelong collection of medicinal plants in his garden which he can now fuss over. He is a proud great-grandfather to six and expects a future Boilermaker

in the bunch. His favorite great grandchild story is when his great granddaughter asked him while at the library, "Grandpa, have you read all these books?" Replying yes, she then asked, "Doesn't your brain hurt?" Now, she is reading his library which includes pharmacy books, law books, and various classics. Joseph also finds time to work in the garage on a Cummins diesel engine which he says "will run on water" once he's finished with it.

### 1980-1989

**Douglas Henry** (BS 1981) and his wife, Kelly, moved to Columbia, SC, and bought a new house. They both work at the WJB Dorn VA Medical Center. Doug is a pharmacist and Kelly is a registered nurse.



*Carl Hudson, Jr. poses with his son, Andy Hudson (BS 1996), who nominated him for the Bowl of Hygeia Award. Andy is a third generation Purdue pharmacy graduate. Carl Hudson, Sr. received his BS in 1949.*

## Carl Hudson, Jr. (BS 1965) Honored for Community Service

Carl Hudson, Jr. (BS 1965), is the owner of Hudson Drug Shop in Paxton, Illinois. He is committed to providing his patients with excellent customer service, including personally delivering medications and making himself available for their emergency prescription needs. It's no wonder that he has been recognized this past year for his commitment to his customers and community.

Parata Systems and Pharmacy Times celebrated the future of pharmacy and the professionals who are leading the way at the inaugural Next-Generation Pharmacist Awards event held in October 2010. Carl was one of three finalists in the U.S. nominated for the *Civic Leader of the Year Award*. Although he was not selected as the winner, he says he was very happy to be included among such respected company. Also in October, Carl was the recipient of the *Illinois Bowl of Hygeia Award*. This annual award, sponsored by Pfizer-Wyeth, is presented to one pharmacist in each state for their community service.

Carl delightfully recalls the story of that "defining moment" when he decided to become a pharmacist. Even at the age of 10, when asked by his mother (once she started talking to him again) if he planned to study chemistry in college, young Carl responded, "No, Mom...I might not live that long if I did, so I'm going to go to Purdue's School of Pharmacy!" If you want to know the details behind his mother's two-year silence (hint: it involves how Carl managed to blow up his family's newly remodeled kitchen with his neighborhood buddy while performing a less than successful science experiment), visit our website at [www.pharmacy.purdue.edu/articles/2010-12-07.Hudson/](http://www.pharmacy.purdue.edu/articles/2010-12-07.Hudson/). You won't be disappointed!



**Kimberly (Ply) McDonough** (PharmD 1982) is the recipient of the *2010 Bowl of Hygeia Award* from the Rhode Island Pharmacists Association. The award was established in 1958 by Claiborne Robins, President of A.H. Robins Company in recognition of the personal time and sacrifice made by pharmacists to their community. In addition to her extensive professional support, she has been active in community and philanthropic activities. She is a supporter of community farms and the Rhode Island Community Food Bank. She has assisted local historic efforts and, with her family, was instrumental in helping the Town of Jamestown purchase and display historic documents related to the town's 1678 founding. She is active in community and church activities. In 2009, she founded the Ghana School Foundation to provide books and educational materials to schools in rural Ghana. Kim is a member of the Purdue College of Pharmacy Dean's Professional Advisory Council. She is married to Jeffrey McDonough, a Purdue alumnus. They have two daughters: Kelsey, a sophomore at North Carolina State University, and Lauren, a senior in high school.

**Linda (Walters) McElhiney** (BS 1984) has been selected to serve on the United States Pharmacopeia (USP) Compounding Expert Committee for the 2010-2015 cycle. The USP develops and publishes the standards of practice for pharmacy and the pharmaceutical industry.

**Amy (Kirchoff) Mitchell** (BS 1984) shares that she has been promoted to Pharmacy Manager at Wal-Mart in Columbus, IN.

**Timothy Tracy** (PhD 1988) has been named Dean of the University of Kentucky College of Pharmacy.

On July 22, 2010, **Greg Wasson** (BS 1981), President and CEO of Walgreens, was featured on TV CNBC "Power Lunch" in which he discussed the state of consumer spending and its impact on Walgreens. To view a video clip of the show, visit <http://www.cnbc.com/id/15840232/?video=1549739837&play=1>.

#### 1990-1999

**Rebecca (Walls) Budreau** (BS 1998, PharmD 1999) and her husband, Chad (BS 1997, Technology), celebrated the birth of their daughter, Marin Ruth, on August 24, 2010. She weighed 7 lbs 8 oz and was 21" long. Big brother, Colin, and big sister, Riley, welcomed her home.

Christopher (BA 1997, Liberal Arts) and **Amelia (Yackus) Holloway** (BS 1998, PharmD 1999) welcomed their first child into the world on March 11, 2010. Madeleine Grace weighed 8 lbs 7 oz and was 21" long. Mom and Dad are enjoying every minute with their little angel!

John and **Rhonda (Radabaugh) Horton** (PharmD 1998) welcomed Sally Grace into the world on September 23, 2010. She weighed 6 lbs 10 oz and measured 17 ½". She joins big brother Samuel (5) who adores her.

On August 1, 2010, **Adrienne (Wilhelm) McGurran** (BS 1997) was promoted in the Navy Reserve to LCDR. She and her husband, Shawn, celebrated the birth of their son, Liam Michael, later that month on August 25.

**Betsy (Bickert) Poon** (PharmD 1994) became a Fellow of the American College of Clinical Pharmacy (ACCP) in October 2010. She and her husband, Phillip, also welcomed the birth of her second child, Nathan Alexander, on July 26, 2010, weighing 6 lbs 4 oz and measuring 17." He was welcomed home by his brother, Colin (3).

**Pam Ringor** (BS 1997) was named by the Kroger Co. Central Division as recipient of the *2009 John Beck Award for Excellence in Pharmacy*. She was chosen from among 335 pharmacists in a five-state operating division.

In April 2010, **Lisa Siefert** (BS 1995), Director of Pharmacy Operations at Walgreens Infusion Services, was appointed as an ASHP Fellow and travelled to Tampa, FL, for the ASHP summer meeting to receive her award. The ASHP Practitioner Recognition Program recognizes excellence in practice and promotes public awareness of outstanding pharmacists who have practiced in health-system pharmacy for at least 10 years. She extends her gratitude to the Purdue Pharmacy



faculty who wrote recommendations on her behalf for this honor.

*Siefert (R) receives her award from ASHP*

#### 2000-Present

William and **Adedoyin Daramola** (PharmD 2002) welcomed their second child, Akosua Opeyeni, on Valentine's Day, 2010. She weighed 7 lbs 14 oz and was 21" long. She's constantly showered with lots of affection by her ever-so-caring older sister, Nana-Efua. The family is enjoying the wonderful addition in their new home.

On July 10, 2010, **Jennifer Deal** (PharmD 2007) and **Eric Wyant** (PharmD 2005) were married in Evansville, IN, and now reside in Newburgh, IN. Jennifer is the Pharmacy Manager of a CVS Pharmacy and Eric is an Assistant Manager of a new Wal-Mart Pharmacy.

## CLASS NOTES

In November, the law firm of Hall, Render, Killian, Heath & Lyman in Indianapolis announced the hiring of



Associate Attorney, **Blake Griese** (PharmD 2007). His practice focuses on transactional, regulatory, compliance, and administrative law matters.

**Valentina Karamacoska** (PharmD 2005) married Sash Becvarovski on July 17, 2010.

**Mohammad Khashayar** (PharmD 2010) and his wife, Angela, welcomed a son, Kamran Aaron, into the world

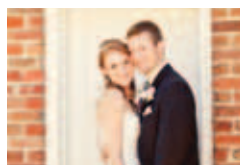


appropriately on Labor Day, September 6, 2010. Kamran weighed 8 lbs 6 oz and was 21 ¼" long. He joins his big brother, Darius.

**Janet Kowalski** (BS 2006) graduated from The Johns Hopkins School of Medicine with an MD degree on May 27, 2010. She is currently a resident in pediatrics at Indiana University in Indianapolis.

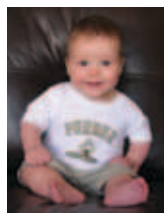
**Erika (Dembowski) Krysiak** (BS 2001) received the *2010 Distinguished Young Pharmacist's Award* presented by the Pharmacists Mutual Companies in honor of her outstanding contributions in pharmacy associations, community affairs, and practice.

**Kira Larimore and Colin Fitzgerald** (both PharmD 2007) married on September 4, 2010. The ceremony was held at Coxhall Gardens in Carmel, IN, with the reception following at the Indianapolis Marriott North. The couple honeymooned in Greece and the Greek Isles. Kira and Colin are clinical phar-



macists working in hospitals in the area of Clearwater, FL.

**Bradley McCrory** (PharmD 2002) and his wife, Tori (BS 2000, School of Management) celebrated the birth of their first child, Nathan Edward, on February 25, 2010. He weighed 8 lbs 7 oz and was 21" long. Brad is currently the Clinical Pharmacy Specialist for Pulmonary Medicine at Cincinnati Children's Hospital Medical Center.



**Jan (Ripberger) Peterson** (PharmD 2002) and her husband, Brent, welcomed the birth of their first son, Grant James, on January 12, 2010.

**Connie (Paul) Snider** (BS 2001, PhD 2006) and her husband, Craig, welcomed a daughter into the world on January 20, 2010. Christelle Matea weighed 6 lbs 2 oz and was 18 ¼" long.



**R'Kes Starling** (BS 2002) is proud to announce his December 2010 graduation from Northwestern University's Kellogg School of Management with an Executive MBA.

**Christopher and Ye Jin (Cho) Wickesberg** (both PharmD 2002) announce the birth of their daughter, Lucille Jane, on January 27, 2010.



She and older brother Daniel (4) are both doing well.

Steve and **Kelli Yaros** (PharmD 2009) welcomed their first child, Zachary George, into the world on June 28, 2010. He weighed 8 lbs 5 oz and was 20" long. The family currently resides in Avon, IN.

## IN MEMORIAM

**John E. Bell** (BS 1968)  
**Bernard W. Feingold** (BS 1959)  
**James J. French** (BS 1959)  
**George C. Fuller** (PhD 1967)  
**Elmer F. Gomes Jr.** (BS 1954)  
**Tameka C. Sullivan-Hall** (PharmD 2004)  
**Charles G. Hiam** (BS 1967)  
**Richard B. Kinsell** (BS 1966)  
**Marvin L. Kleinman** (BS 1948)  
**J Chester Long, II** (BS 1968)  
**Russell F. Parke** (BS 1954, MS 1956, PhD 1958)  
**James E. Pritchard** (PhD 1948)  
**Wally L. Sielski** (BS 1938)  
**Paul Skierkowski** (BS 1963; MS 1969 & PhD 1971, Health Sciences)  
**C. Kent Stembel** (BS 1976)  
**Roger L. Tam** (BS 1949)



**Steve Davisson (BS 1981)**  
***Elected to Indiana House of Representatives***

January 2011 will mark a momentous occasion for the General Assembly in Indianapolis, IN. For the first time in recent memory, two pharmacists will be represented on the legislature.

Both are members of the Indiana Pharmacists Alliance (IPA). Republican Ron Grooms won the open Senate seat in District 46, and Republican Steven Davisson (BS 1981) won the open House seat in District 73. Davisson has practiced pharmacy in southern Indiana for 27 years and has been a pharmacist at DanMar Pharmacy, an independent community pharmacy, in Salem for the past 13 years. The College of Pharmacy is proud to have one of our own serve in the House of Representatives, but also to have the voice of pharmacy heard in Indiana legislature.

**Why did you choose to go into public office?**

I had been somewhat involved and interested in politics for several years, but over the past few years I had seen issues that were being ignored. I live in a district that has lost thousands of manufacturing jobs over the past decade. Many of these folks were customers of mine and they not only lost their jobs, but they also lost their health insurance. After writing Representatives and Senators and working hard on some pharmacy legislation that failed to pass a few years ago, I became convinced that to effectively implement real change, I might need to work from the inside.

**How might having pharmacists represented on the legislature make an impact?**

Almost every year in the Indiana Legislature pharmacy-related bills are brought forward. Many of these may be good bills, but some may have negative effects on pharmacy. By having a voice with some experience in the profession, we can weigh in on the impact these bills will have on the practice and the business of pharmacy. Too often, we have had legislators voting on these bills who have little or no knowledge of pharmacy. It is important to have a diverse group of legislators who can bring their particular expertise into the discussion.

**What are your aspirations while serving in office?**

Most importantly, I want to bring a fair and honest representation to the people of my district, the people of Indiana, and Hoosier pharmacists. I hope that I can make a positive impact by helping create a more business-friendly environment that will lead to more sustainable jobs for Hoosiers and more opportunities for younger Hoosiers. I hope to have a positive influence on the practice of pharmacy and healthcare overall in our state. The future of our state and our profession rest on the moves we make today, therefore it is so important that we are proactive in our profession as individuals, in our organizations, and in our government to ensure our place in the healthcare industry.

To read IPA's press release, visit [www.indianapharmacists.org/pr\\_elections.html](http://www.indianapharmacists.org/pr_elections.html). You may also learn more about Davisson at [www.stevedavisson.com/](http://www.stevedavisson.com/).

**Update your info**

Moved?  
 Started a new job? Retired?  
 Just Married?  
 Had a baby?

Share your news with us by completing the online form at <http://www.pharmacy.purdue.edu/update>

OR

MAIL TO: College of Pharmacy  
 Purdue University  
 Heine Pharmacy Building,  
 Room 104  
 575 Stadium Mall Drive  
 West Lafayette, IN 47907-2091  
 FAX: (765) 494-9587

We encourage you to update your contact information so we can continue to keep you informed about the College of Pharmacy. You will be given the opportunity to advise us whether or not to share your news in *The Purdue Pharmacist*. Class Notes only reports those events that have actually occurred; this precludes engagements and pregnancies. We also do not report divorces, and we reserve the editorial discretionary veto. If you would like to submit a photograph (i.e., wedding and baby portraits), please mail them to the above address or email them to the Editor; they will be used based on appropriateness and space availability and will not



be returned. Please direct Class Notes inquiries to Amy Chandler, Editor, at [chandler@purdue.edu](mailto:chandler@purdue.edu).

College of Pharmacy  
Purdue University  
Heine Pharmacy Building, Room 104  
575 Stadium Mall Drive  
West Lafayette, IN 47907-2091

# Tune in to

## ***“Engineering Pharmaceuticals”***

The College of Pharmacy and the College of Engineering at Purdue University, along with WFYI Public Radio in Indianapolis, have collaborated to produce a radio program that discusses the engineering of pharmaceuticals. “Engineering Pharmaceuticals” is being broadcast nationally on public radio stations and is available online at [www.pharmacy.purdue.edu/radio.php](http://www.pharmacy.purdue.edu/radio.php) and <https://engineering.purdue.edu/Engr/AboutUs/News/Radio>.

First aired in June 2010, the program features Purdue College of Pharmacy faculty and alumni. So far, the research of Marietta Harrison, Professor of Medicinal Chemistry and Molecular Pharmacology and Director of the Oncological Sciences Center, has been highlighted, and Jeff Hatfield (BS 1981), CEO of Vitae Pharmaceuticals, has been featured.

